

# DR30 SERIES



## Mechanical design

Contact system                    snap-action  
 Contact arrangement            1NO  
 Contact materials                Au

## Mechanical characteristics

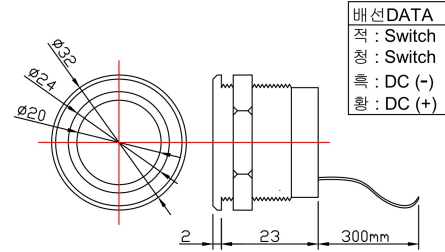
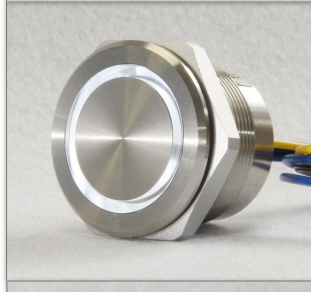
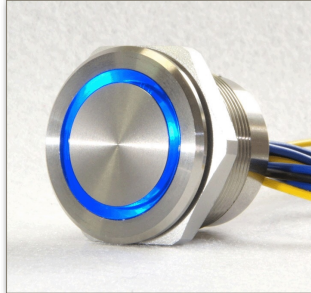
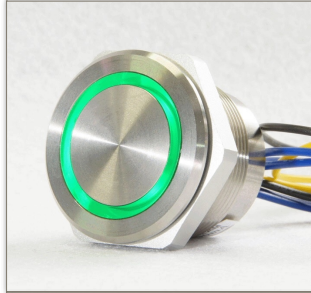
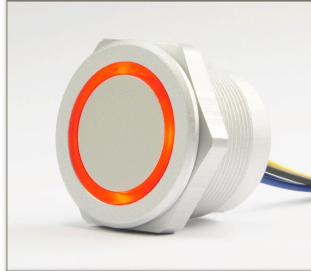
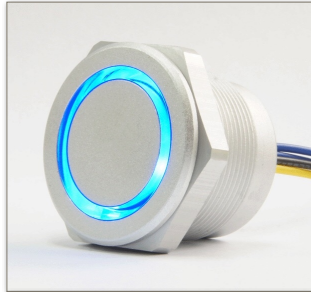
Operating force                    3.3 <sup>+/-0.6</sup> N  
 Switching travel                  0.34 <sup>+/-0.1</sup> mm  
 Robustness min                    100N

## Electrical characteristics

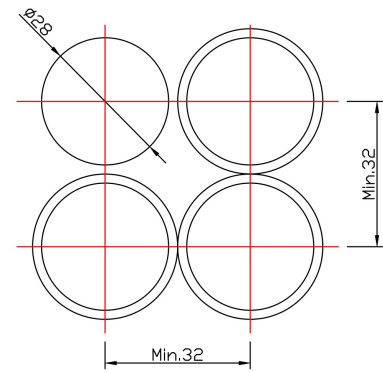
Rated voltage min.                0.02V  
 Rated voltage max.               42V  
 Rated current min.                0.01mA  
 Rated current max.               100mA  
 Rated power max.                (ohmic load) 1W  
 Contact resistance when new max.    100mΩ  
 Insulation resistance            10<sup>9</sup> Ω  
 Bouncing time max.              5ms

## Other specifications

Ambient temp. operating min.            -40°C  
 Ambient temp. operating max.            +80°C  
 Resistance to constant environment       according to IEC 600 68-2-3 and 2-30  
 Resistance at variable environment        according to IEC 600 68-2-14 and 2-33  
 Operating life at R =23 and test force =1.5\*rated force    1,000,000  
 Solderability/solder heat resistance  
 PCB version                            DIN IEC 600 68-2-20  
 Flammability of materials                UL 94 HB



배선DATA  
 적 : Switch  
 청 : Switch  
 흑 : DC (-)  
 황 : DC (+)



DR30-□□□

RING COLOR	LED COLOR	VOLTAGE
B : BLUE	B : BLUE	1 : DC 6V
R : RED	R : RED	3 : DC
G : GREEN	G : GREEN	12 ~ 24V
Y : YELLOW	Y : YELLOW	무표시 : 없음
C : CLEAR	W : WHITE	
	무표시 : 없음	

DREAM ELECTRONICS.,

사무실 : 02 - 6679 - 3387  
 팩 스 : 02 - 6679 - 3386  
 휴대폰 : 010 - 3890 - 1718  
 이메일 : [eao7@naver.com](mailto:eao7@naver.com)

서울시  
 구로구 경인로53길 15  
 중앙유통단지 바-4322  
[www.dream-mart.com](http://www.dream-mart.com)