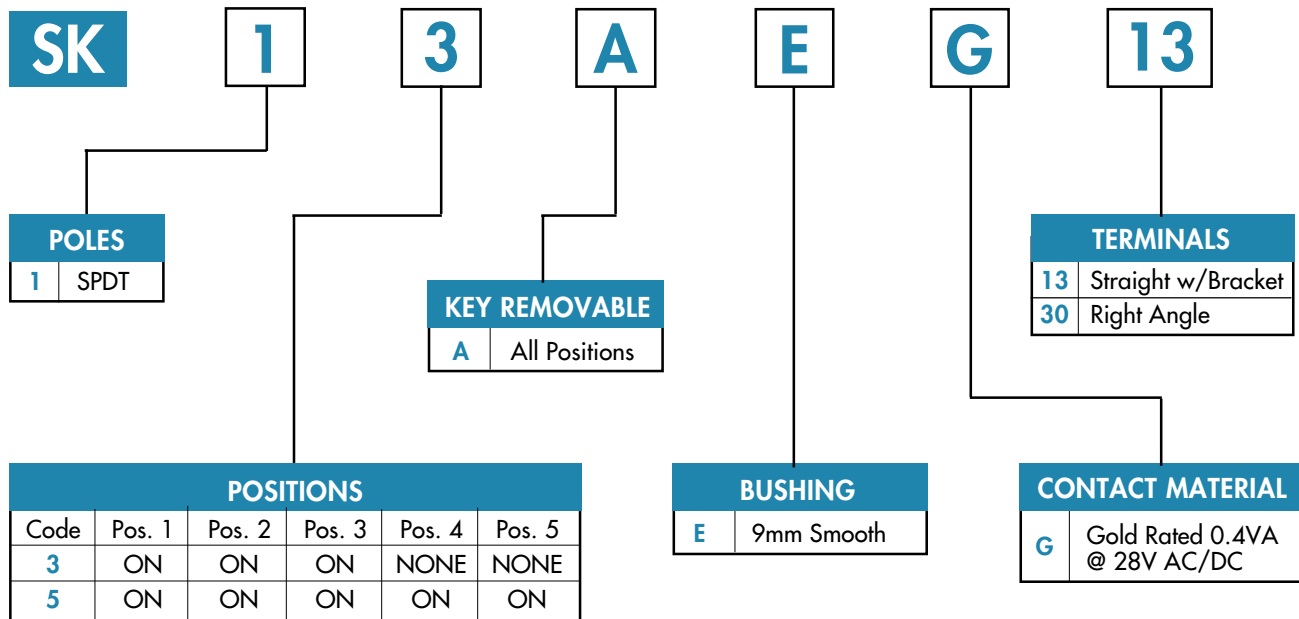


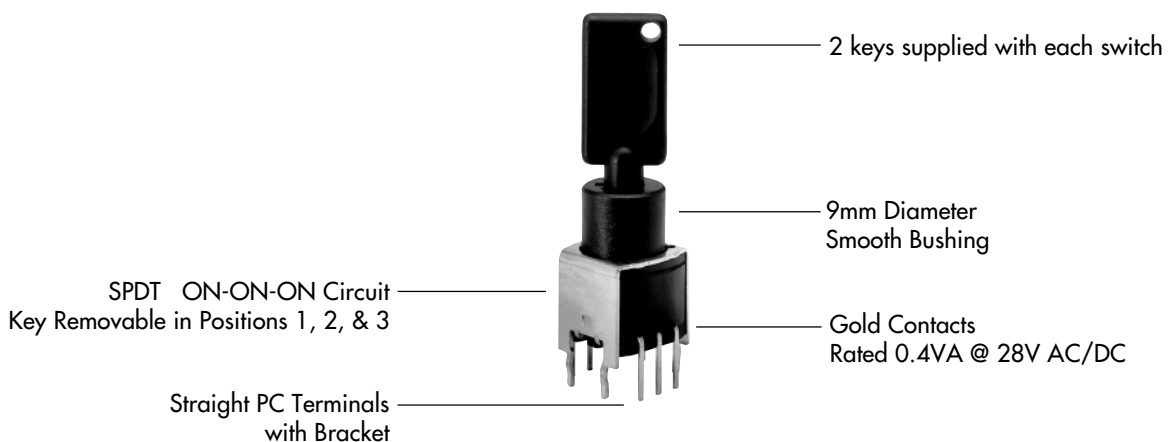


TYPICAL SWITCH ORDERING EXAMPLE



DESCRIPTION FOR TYPICAL ORDERING EXAMPLE

SK13AEG13





GENERAL SPECIFICATIONS

Electrical Capacity (Resistive Load)

Power Level: 0.4VA @ 28V AC/DC
(Applicable Range 0.1mA ~ 0.1A @ 20mV ~ 28V)

Other Ratings

Contact Resistance: 100 milliohms maximum
Insulation Resistance: 100 megohms minimum @ 500V DC
Dielectric Strength: 500V AC minimum
Mechanical Life: 30,000 cycles minimum
Electrical Life: 20,000 cycles minimum
Static Capability: Withstands 15 kilovolts ESD
Nominal Operating Torque: 2.039 grams-cm (2.83 ounce-in)
Contact Timing: Break before make
Angle of Throw: 45° for 3-position & 5-position

Materials & Finishes

Key: Polyacetal
Housing/Bushing: Fiberglass reinforced polyamide
Base: Fiberglass reinforced polyamide
Rotor & Stopper: Polyacetal
Tumbler Plate: Brass
Movable Contactor: Phosphor bronze with gold plating
Stationary Contacts: Phosphor bronze with tin-lead plating
Terminals: Phosphor bronze with tin-lead plating
Mounting Bracket: Steel with tin-lead plating

Environmental Data

Operating Temp Range: -25°C through +70°C (-13°F through +158°F)
Humidity: 90 ~ 95% for 96 hours @ 40°C (104°F)
Vibration: 10 ~ 55 Hz with peak-to-peak amplitude of 1.5mm traversing the frequency range and returning in 1 minute; 3 right angled directions for 2 hours
Shock: 50g acceleration (tested in 3 right angled directions, with 5 shocks in each direction)

Installation

Soldering Time & Temperature: 3 seconds @ 350°C
Process Seal: See [Supplement Index](#) for specific processing data.



Series SK

Antistatic Process Compatible Keylock Switches

POLES, CIRCUITS, & KEY-REMOVABLE POSITIONS

Pole & Throw	Model	Key Positions					Connected Terminals (Terminal numbers are not on switch.)					Schematic	⊙ = Key Removable • = Not Removable ∨ = Maximum Arc
		Pos 1	Pos 2	Pos 3	Pos 4	Pos 5	Pos 1	Pos 2	Pos 3	Pos 4	Pos 5		
SP3T	SK13A	ON	ON	ON	----	----	COM-1	COM-2	COM-3	----	----		
SP5T	SK15A	ON	ON	ON	ON	ON	COM-1	COM-2	COM-3	COM-4	COM-5		

KEY REMOVABLE

A All Positions (45° angular throw)

BUSHING

E 9mm Smooth

CONTACT MATERIAL & RATING

G Gold over Brass or Copper

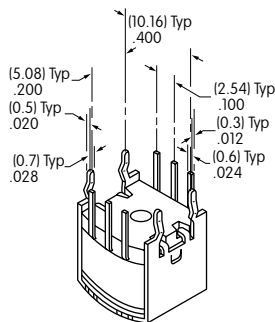
Logic Level

0.4VA @ 28V AC/DC maximum

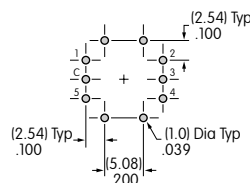
Note: See [Supplement Index](#) to find complete explanation of operating range.

TERMINALS

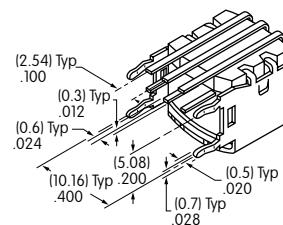
13 Straight PC with Bracket



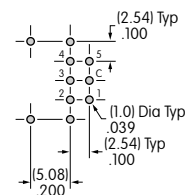
Single Pole



30 Right Angle PC



Single Pole





Series SK

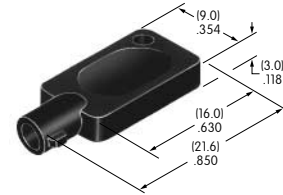
Antistatic Process Compatible Keylock Switches

KEY

AT4094 for Antistatic Subminiature Models

Polyacetal

2 keys provided with each switch
(no master key available)

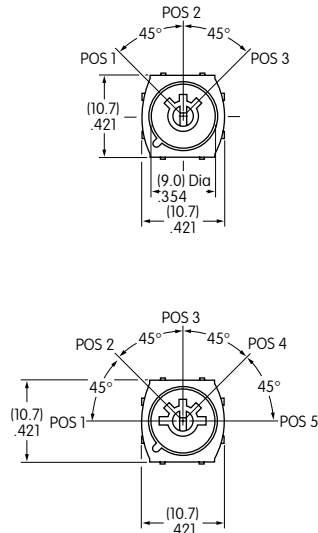


TYPICAL SWITCH DIMENSIONS

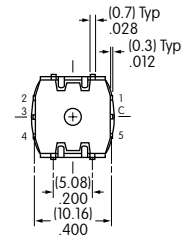
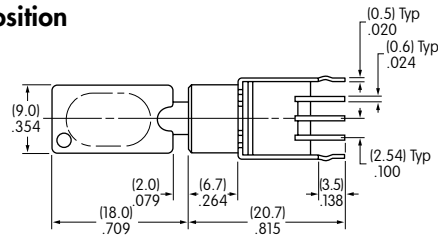
Straight PC with Bracket



SK13AEG13

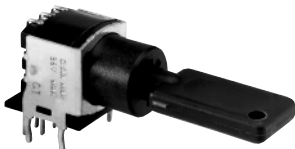


3 Position

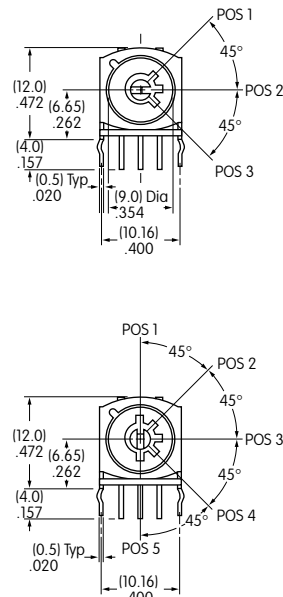


5 Position

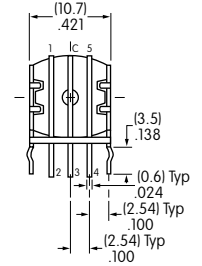
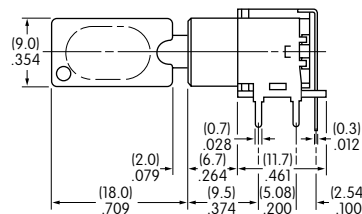
Right Angle PC



SK15AEG30



3 Position



5 Position