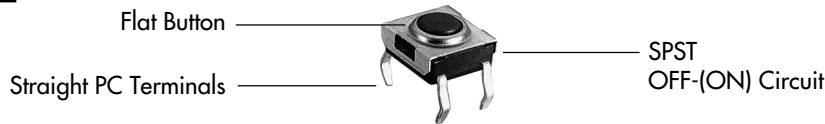
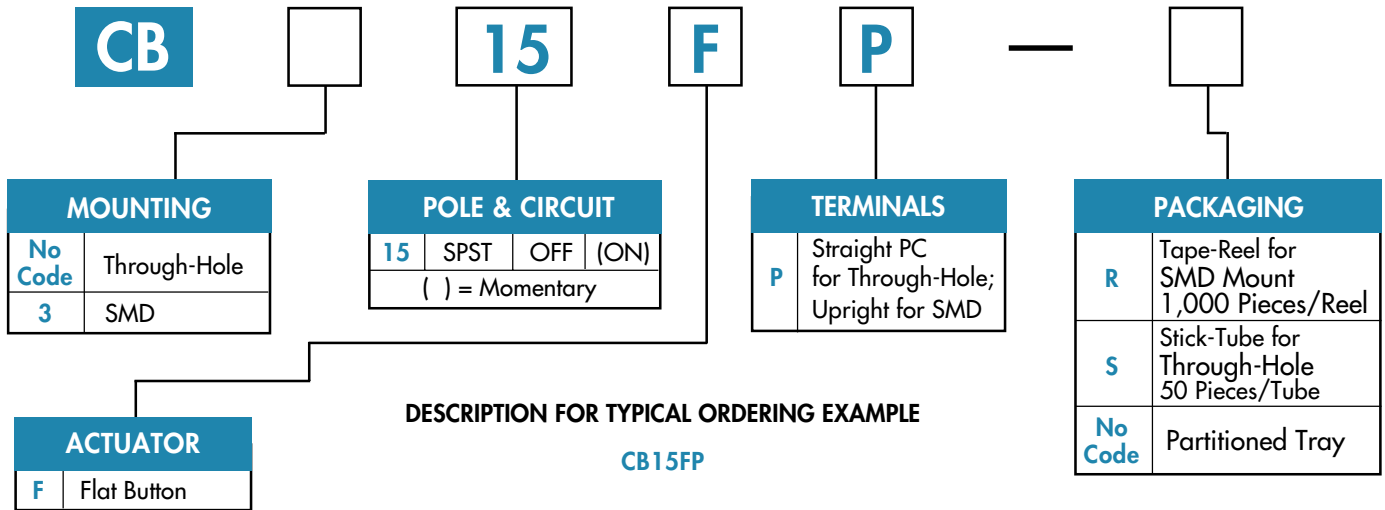




Series CB

6mm Washable Tactile Switches

TYPICAL SWITCH ORDERING EXAMPLE



■ General Specifications ■ Dimensions

POLE & CIRCUIT

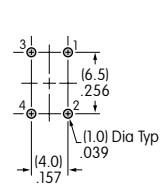
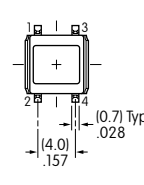
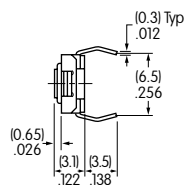
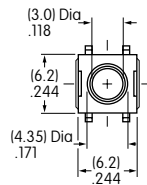
		Actuator Position () = Momentary		Switch Throw & Schematic		
Pole	Model	Normal	Down	SPST		Note: Terminal numbers are not actually on switch.
SP	CB15 CB315	OFF	(ON)			

TYPICAL SWITCH DIMENSIONS

Single Pole • Single Throw • Through-Hole



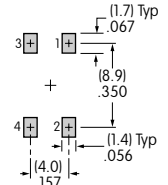
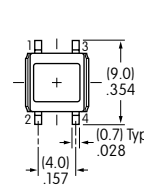
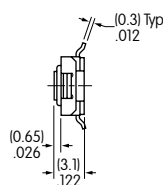
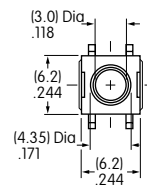
CB15FP



Single Pole • Single Throw • SMD



CB315FP





GENERAL SPECIFICATIONS

Electrical Capacity (Resistive Load)

Power Level: 50mA @ 24V DC maximum

Other Ratings

	CB Through-Hole Models	CB3 SMD Models
Contact Resistance:	100 milliohms maximum	100 milliohms maximum
Insulation Resistance:	100 megohms minimum @ 250V DC	100 megohms minimum @ 250V DC
Dielectric Strength:	250V AC minimum between contacts & between contacts & case	250V AC minimum between contacts & between contacts & case
Mechanical Life:	100,000 operations minimum	100,000 operations minimum
Electrical Life:	100,000 operations minimum	100,000 operations minimum
Nominal Operating Force:	160 grams	160 grams
Contact Bounce:	0.1 millisecond maximum with normal hand operation	0.1 millisecond maximum with normal hand operation
Total Travel:	.250mm (.010")	.250mm (.010")

Materials & Finishes

Actuator:	Glass fiber reinforced polyamide
Case:	Stainless steel
Seal:	Polytetrafluoroethylene
Base:	Polyphthalamide
Movable Contacts:	Beryllium copper with silver plating
Stationary Contacts:	Brass with silver plating
Terminals:	Brass with silver plating

Environmental Data

Operating Temp Range:	-25°C through +70°C (-13°F through +158°F)
Humidity:	90 ~ 95% humidity for 96 hours @ 40°C (104°F)
Vibration:	10 ~ 55Hz with peak-to-peak amplitude of 1.5mm traversing the frequency range & returning in 1 minute; 3 right angled directions for 2 hours
Shock:	50g acceleration (tested in 6 right angled directions, with 5 shocks in each direction)

Installation

Soldering Time & Temperature:	For CB: 3 seconds @ 350°C manual solder or 5 seconds @ 270°C solder pot For CB3: 3 seconds @ 350°C manual solder
Process Seal:	See Supplement Index for specific processing data.

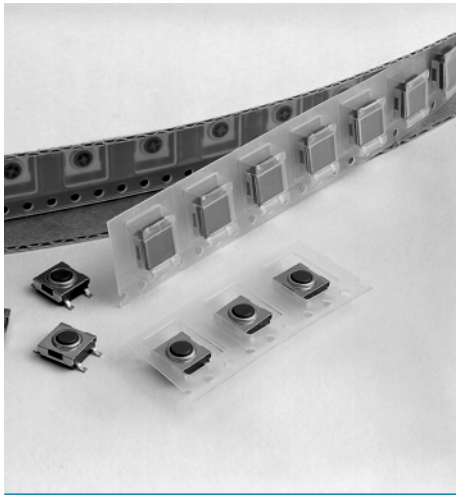


PACKAGING FOR SURFACE MOUNT & THROUGH-HOLE DEVICES

Tape-Reel Packaging

R **Tape-Reel Packaging for SMD Mount**

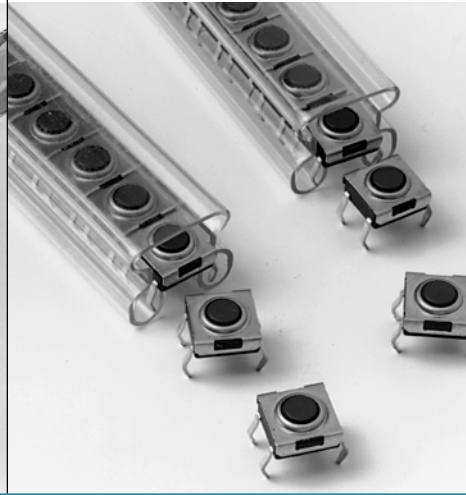
Switches must be ordered in 1,000-piece increments when tape-reel packaging is selected.



Stick-Tube Packaging

S **Stick-Tube Packaging for Through-Hole Mount**

Switches must be ordered in 50-piece increments when stick-tube packaging is selected.



Tray Packaging

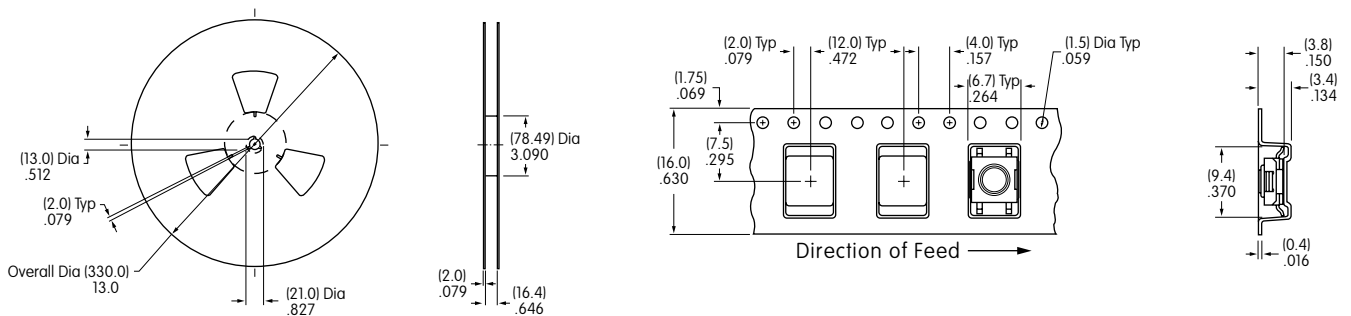
No Code **Partitioned Tray for SMD & Through-Hole Mount**

If the CB is ordered in less than 50-piece increments or CB3 in less than 1,000 pieces, the switches are packaged in a partitioned tray. No code is required.



Tape-Reel Packaging for SMD

Each tape-reel of 1,050 pockets contains 1,000 switches.
 Minimum Leader Length: 420mm (16.54"); Minimum Trailer Length: 180mm (7.09")



Stick Tube Packaging for Through-Hole

Each stick-tube contains 50 switches.

