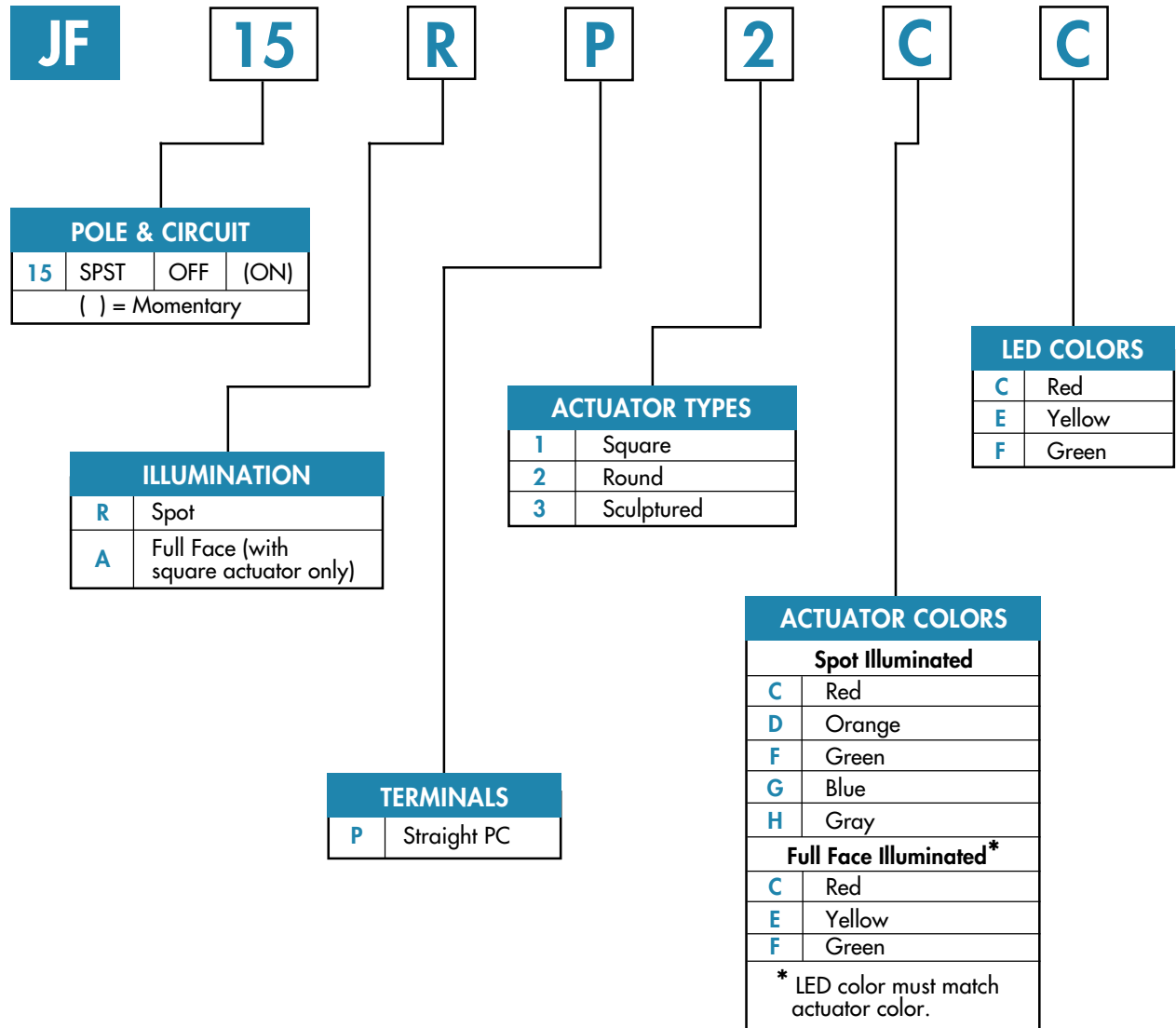


TYPICAL SWITCH ORDERING EXAMPLE



DESCRIPTION FOR TYPICAL ORDERING EXAMPLE

JF15RPP2CC





GENERAL SPECIFICATIONS

Electrical Capacity (Resistive Load)

Power Level: 50mA @ 24V DC

Other Ratings

Contact Resistance: 50 milliohms maximum
Insulation Resistance: 500 megohms minimum @ 250V DC
Dielectric Strength: 250V AC minimum
Mechanical Life: 500,000 operations minimum
Electrical Life: 500,000 operations minimum
Nominal Operating Force: 306 grams for flush actuator
204 grams for sculptured actuator
Contact Bounce: 0.1 millisecond maximum
Total Travel: 0.4mm (.016") for flush actuators; 0.8mm (.031") for sculptured actuator

Materials & Finishes

Actuator: Polyamide for spot illuminated; polycarbonate for full face
Case: Glass fiber reinforced polyamide
Seal: Nitrile butadiene rubber
Base: Glass fiber reinforced polyester
Movable Contact: Phosphor bronze with silver plating
Stationary Contacts: Brass with silver plating
Terminals: Brass with silver plating

Environmental Data

Operating Temp Range: -25°C through +50°C (-13°F through +122°F) for full face;
-25°C through +70°C (-13°F through +158°F) for all others
Humidity: 90 ~ 95% humidity for 96 hours @ 40°C (104°F)
Vibration: 10 ~ 55Hz with peak-to-peak amplitude of 1.5mm traversing the frequency range
& returning in 1 minute; 3 right angled directions for 2 hours
Shock: 50g acceleration (tested in 6 right angled directions, with 5 shocks in each direction)

Installation

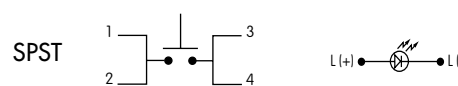
Soldering Time & Temperature: 3 seconds @ 350°C or 5 seconds @ 270°C
Process Seal: See [Supplement Index](#) for specific processing data.



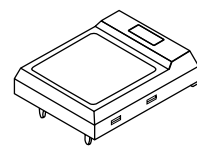
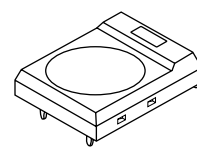
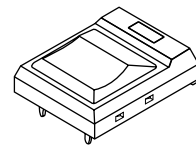
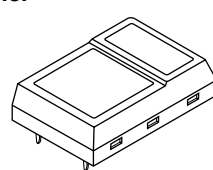
Series JF

Dome Contact Ultra-Thin Tactile Switches

POLE & CIRCUIT

		Actuator Position () = Momentary		Switch Throw & Schematics	Note: Terminal numbers are shown on switch. LED circuit is isolated and requires external power source.
Pole	Model	Normal	Down		
SP	JF15	OFF	(ON)	SPST 	

ILLUMINATION & ACTUATOR TYPES

R Spot Illumination			A Full Face Illumination	
1 Square Actuator	2 Round Actuator	3 Sculptured Actuator	1 Square Actuator	
				
Actuator Colors Available: C, D, F, G, H Housing is black.			Actuator Colors Available: C, E, F Housing is black.	

Color Codes:



Red



Orange



Yellow



Green



Blue



Gray

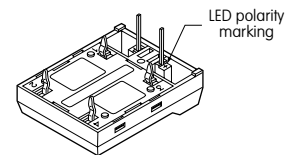
TERMINALS



P Straight PC

With isolated lamp circuit

Further details shown in Typical Switch Dimensions.



LED COLORS & SPECIFICATIONS

LEDs are supplied as an integral part of the switch.

The electrical specifications shown are determined at a basic temperature of 25°C.

If the source voltage exceeds the rated voltage, a ballast resistor is required.

The resistor value can be calculated by using the formula in the Supplement; see [Supplement Index](#).

		Spot Illumination			Full Face Illumination		
		C	E	F	C	E	F
Color:		Red	Yellow	Green	Red	Yellow	Green
Forward Peak Current	I_{FM}	40mA	40mA	40mA	30mA	30mA	30mA
Continuous Forward Current	I_F	30mA	30mA	30mA	20mA	20mA	20mA
Forward Voltage	V_F	1.7V	2.2V	2.2V	1.85V	2.1V	2.15V
Reverse Peak Voltage	V_{RM}	4V	4V	4V	4V	4V	4V
Current Reduction Rate Above 25°C	ΔI_F	0.67mA/°C	0.67mA/°C	0.67mA/°C	0.4mA/°C	0.4mA/°C	0.4mA/°C

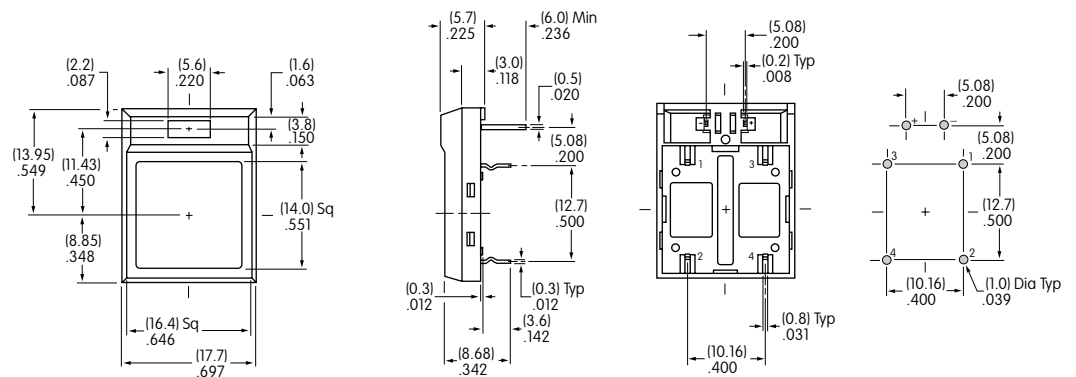


TYPICAL SWITCH DIMENSIONS

Spot Illuminated with Square Actuator



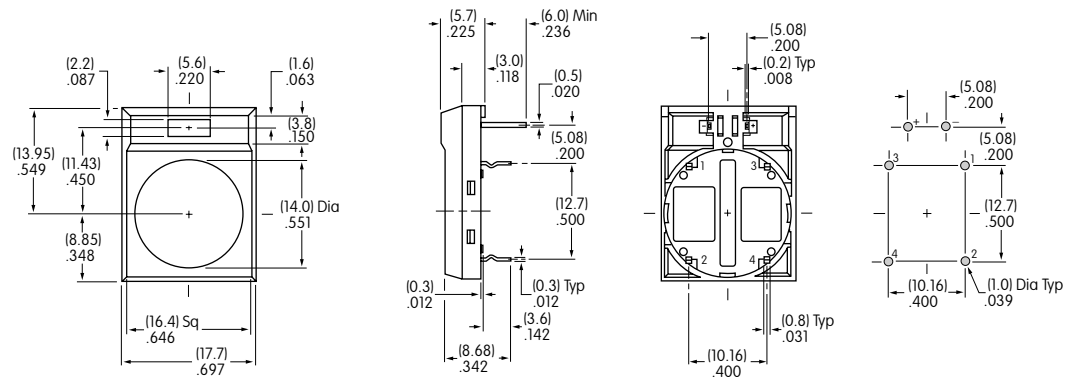
JF15RP1CC



Spot Illuminated with Round Actuator



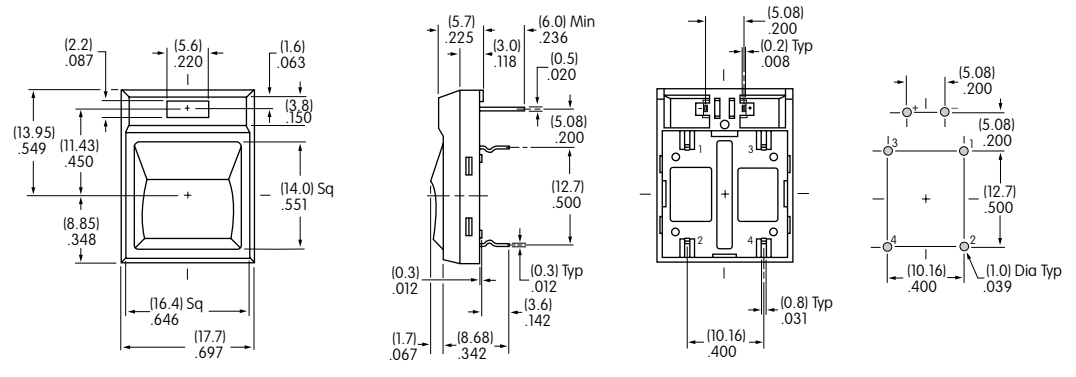
JF15RP2CC



Spot Illuminated with Sculptured Actuator



JF15RP3CC



Full Face Illuminated with Square Actuator



JF15AP1CC

