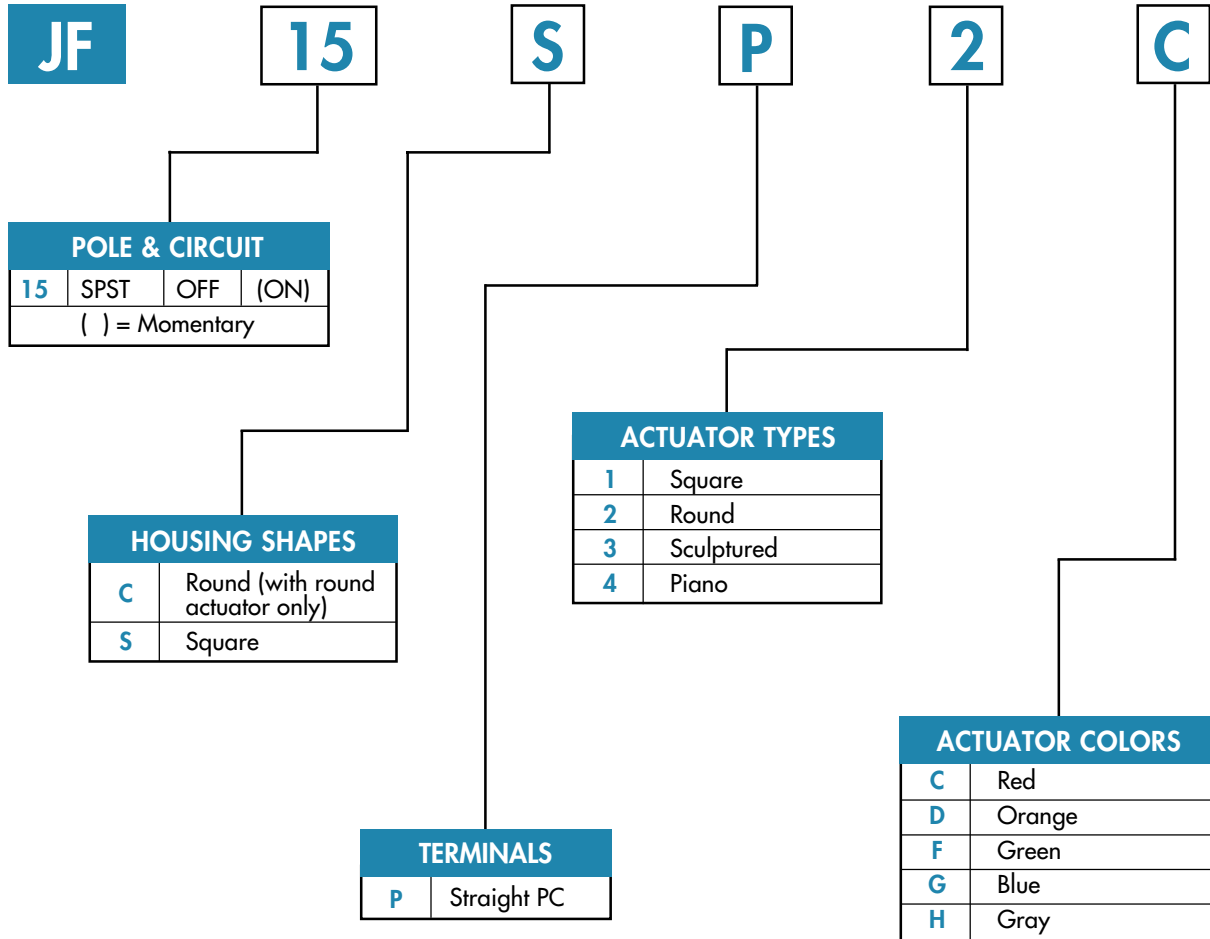


TYPICAL SWITCH ORDERING EXAMPLE



DESCRIPTION FOR TYPICAL ORDERING EXAMPLE

JF15SP2C





GENERAL SPECIFICATIONS

Electrical Capacity (Resistive Load)

Power Level: 50mA @ 24V DC

Other Ratings

Contact Resistance:	50 milliohms maximum
Insulation Resistance:	500 megohms minimum @ 250V DC
Dielectric Strength:	250V AC minimum
Mechanical Life:	500,000 operations minimum
Electrical Life:	500,000 operations minimum
Nominal Operating Force:	200 grams for sculptured actuator 204 grams for piano actuator 306 grams for square & round flush actuators
Contact Bounce:	0.1 millisecond maximum
Total Travel:	0.4mm (.016") for flush actuators; 0.8mm (.031") for sculptured & piano actuators

Materials & Finishes

Actuator:	Polyamide
Case:	Glass fiber reinforced polyamide
Seal:	Nitrile butadiene rubber
Base:	Glass fiber reinforced polyester
Movable Contact:	Phosphor bronze with silver plating
Stationary Contacts:	Brass with silver plating
Terminals:	Brass with silver plating

Environmental Data

Operating Temp Range:	-25°C through +85°C (-13°F through +185°F)
Humidity:	90 ~ 95% humidity for 96 hours @ 40°C (104°F)
Vibration:	10 ~ 55Hz with peak-to-peak amplitude of 1.5mm traversing the frequency range & returning in 1 minute; 3 right angled directions for 2 hours
Shock:	50g acceleration (tested in 6 right angled directions, with 5 shocks in each direction)

Installation

Soldering Time & Temperature:	3 seconds @ 350°C or 5 seconds @ 270°C
Process Seal:	See Supplement Index for specific processing data.



Series JF

Dome Contact Ultra-Thin Tactile Switches

POLE & CIRCUIT

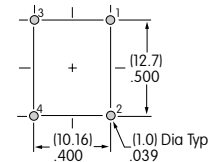
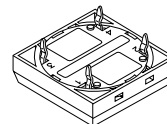
		Actuator Position () = Momentary		Switch Throw & Schematic		
Pole	Model	Normal	Down	SPST		Note: Terminal numbers are shown on switch.
SP	JF15	OFF	(ON)			

HOUSING SHAPES & ACTUATOR TYPES

C Round Housing		S Square Housing			
2 Round Actuator	1 Square Actuator	2 Round Actuator	3 Sculptured Actuator	4 Piano Actuator	
Cap Colors Available:	C Red	D Orange	F Green	G Blue	H Gray
					Housing is black.

TERMINALS

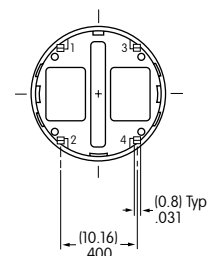
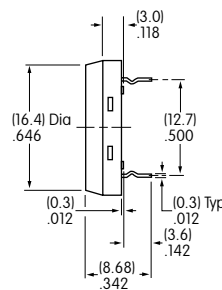
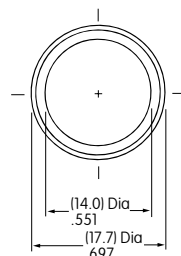
P Straight PC



Further details shown in Typical Switch Dimensions.

TYPICAL SWITCH DIMENSIONS

Round Actuator



JF15CP2C

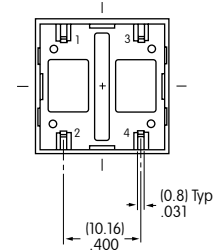
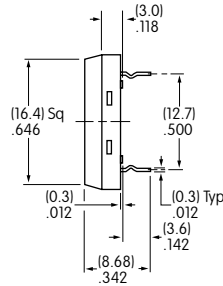
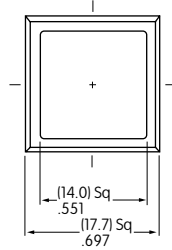


TYPICAL SWITCH DIMENSIONS

Square Actuator



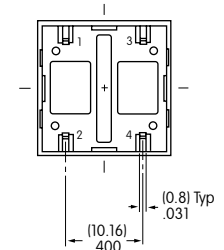
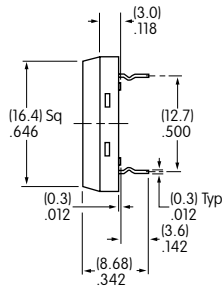
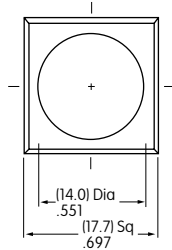
JF15SP1C



Round Actuator



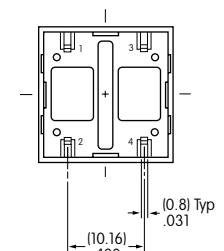
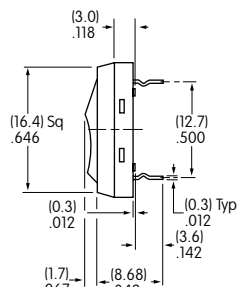
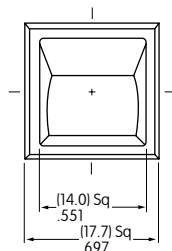
JF15SP2C



Sculptured Actuator



JF15SP3C



Piano Actuator



JF15SP4C

