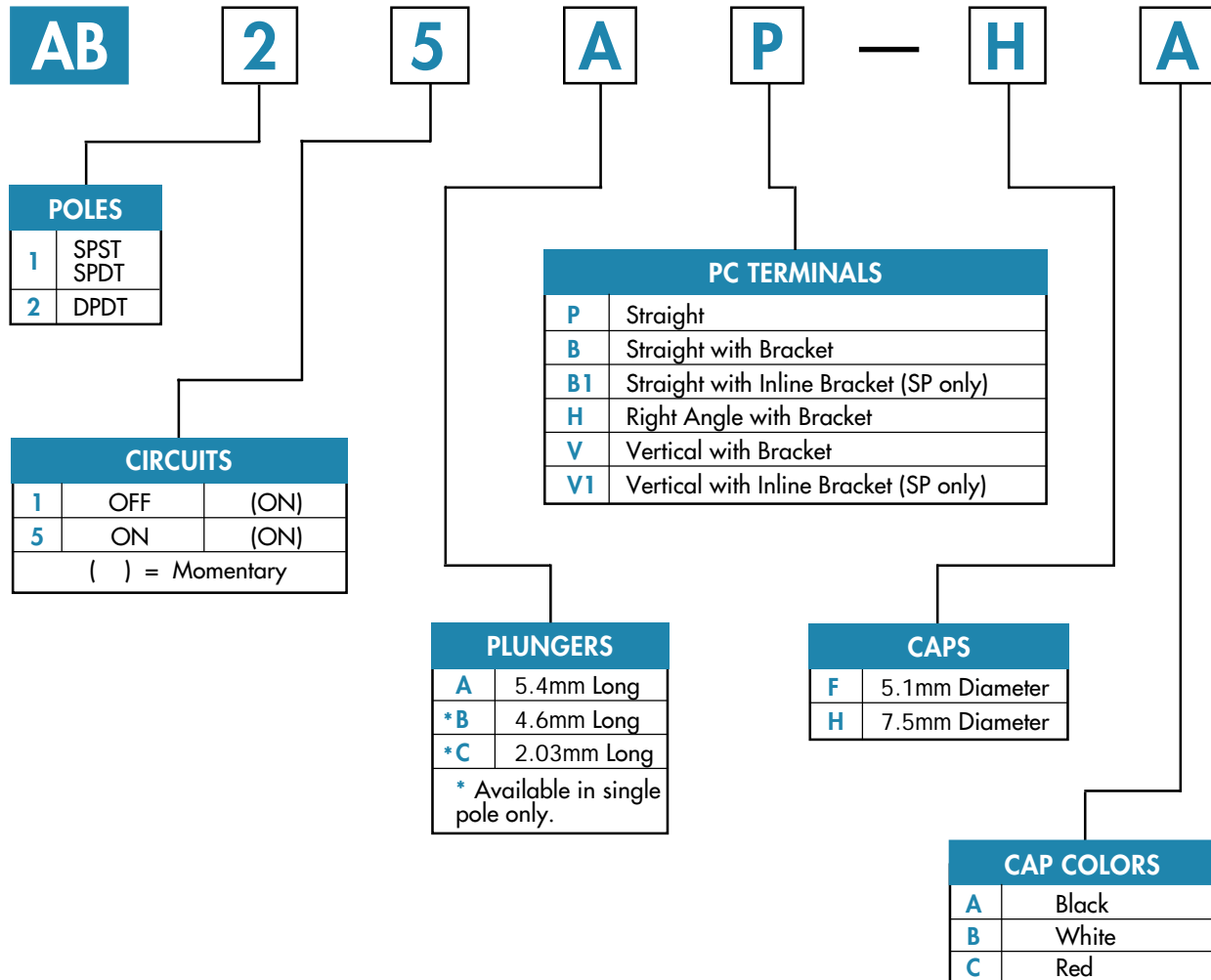
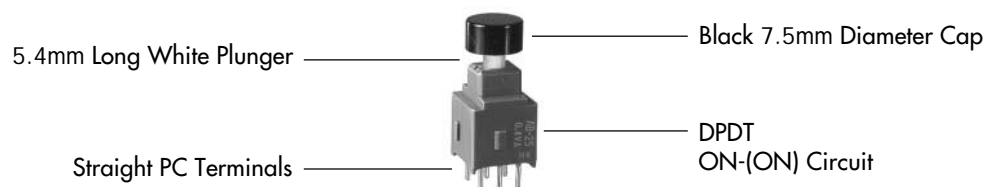


TYPICAL SWITCH ORDERING EXAMPLE



DESCRIPTION FOR TYPICAL ORDERING EXAMPLE

AB25AP-HA





GENERAL SPECIFICATIONS

Electrical Capacity (Resistive Load)

Logic Level: 0.4VA maximum @ 28V AC/DC maximum
(Applicable Range 0.1mA ~ 0.1A @ 20mV ~ 28V)
Note: See [Supplement Index](#) to find explanation of operating range.

Other Ratings

Contact Resistance: 50 milliohms maximum
Insulation Resistance: 500 megohms minimum @ 500V DC
Dielectric Strength: 500V AC minimum
Mechanical Life: 50,000 operations minimum
Electrical Life: 50,000 operations minimum
Nominal Operating Force: 260 grams
Contact Timing: Nonshorting (break-before-make)
Travel: 0.7mm (.028") pretravel; 0.4mm (.016") overtravel; 1.1mm (.043") total travel

Materials & Finishes

Plunger: Polyacetal
Case Housing: Glass fiber reinforced polyamide
Support Bracket: Tin plated phosphor bronze
Movable Contact: Phosphor bronze with gold plating over silver plating
Stationary Contacts: Brass with gold plating over nickel undercoating

Environmental Data

Operating Temp Range: -30°C through +85°C (-22°F through +185°F)
Humidity: 90 ~ 95% humidity for 96 hours @ 40°C (104°F)
Vibration: 10 ~ 55Hz with peak-to-peak amplitude of 1.5mm traversing the frequency range & returning in 1 minute; 3 right angled directions for 2 hours
Shock: 50g acceleration (tested in 6 right angled directions, with 3 shocks in each direction)

Installation

Cap Installation Force: 5.1 kg (11.2 lbs) maximum downward force on actuator
Soldering Time & Temperature: 3 seconds @ 350°C or 5 seconds @ 270°C
Process Seal: See [Supplement Index](#) for specific processing data.

Standards & Certifications

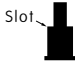

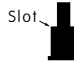


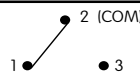
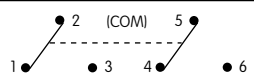
IECQ Approved: All pushbutton models recognized at 0.4VA maximum @ 28V AC/DC maximum
Qualification Approval Number: JP792-1A



Series A

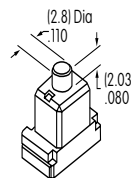
Washable Subminiature Pushbutton Switches

POLES & CIRCUITS

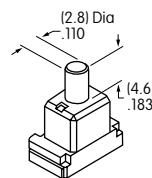
		Plunger Position () = Momentary		Connected Terminals		Throw & Schematics
Pole	Model	Normal 	Down 	Normal 	Down 	Note: Terminal numbers are not actually on the switch.
SP	AB11	OFF	(ON)	OPEN	3-1	SPST 
SP	AB15	ON	(ON)	2-3	2-1	SPDT 
DP	AB25	ON	(ON)	2-3 5-6	2-1 5-4	DPDT 

PLUNGERS

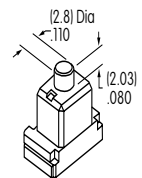
A 5.4mm Long



B 4.6mm Long (on SP only)



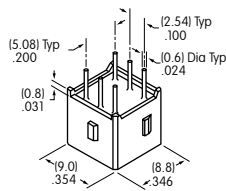
C 2.03mm Long (on SP only)



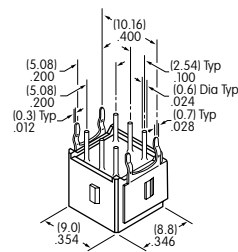
Standard Plunger Color: White Contact factory for red or black options.

PC TERMINALS

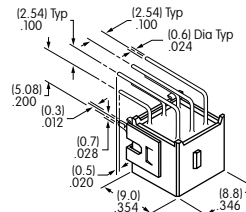
P Straight



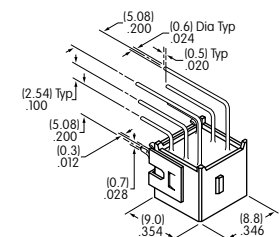
B Straight with Bracket



H Right Angle with Bracket



V Vertical with Bracket



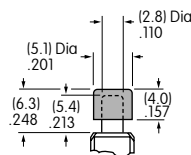
Use of a support bracket or placement of the square bushing in a panel cutout increases PCB mounting stability. B1 & V1 terminal dimensions appear on the pushbutton drawings which follow.

OPTIONAL SLIP-ON CAPS

F AT475
5.1mm Diameter Cap

Material: PBT

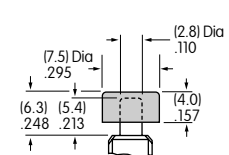
For use with plungers A & B only.



H AT496
7.5mm Diameter Cap

Material: PBT

For use with plungers A & B only.



Colors Available:



Black



White



Red



Series A

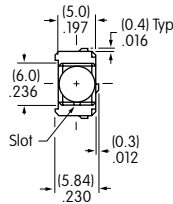
Washable Subminiature Pushbutton Switches

TYPICAL SWITCH DIMENSIONS

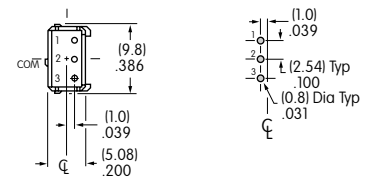
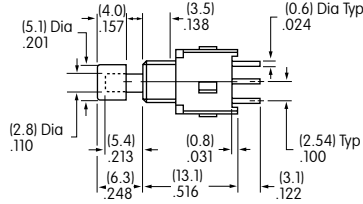
Straight PC



AB15AP-FA



Single Pole

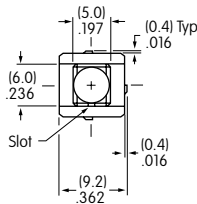


AB11 models do not have terminal 2.

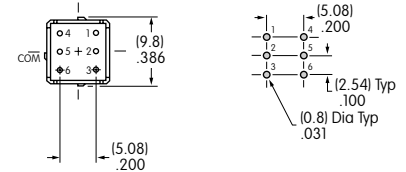
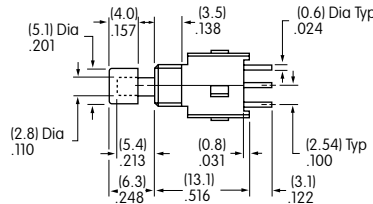
Straight PC



AB25AP-FA



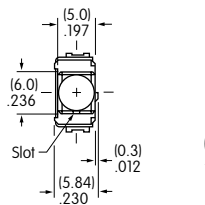
Double Pole



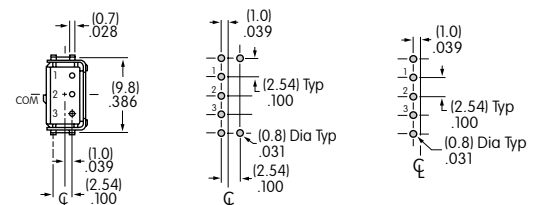
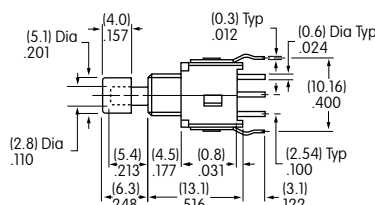
Straight PC • Bracket



AB15AB-FA



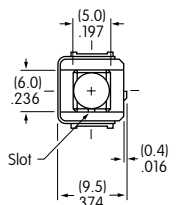
Single Pole



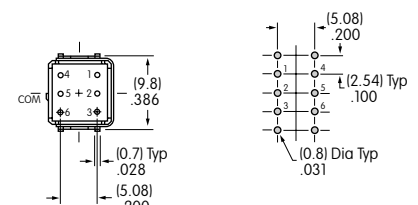
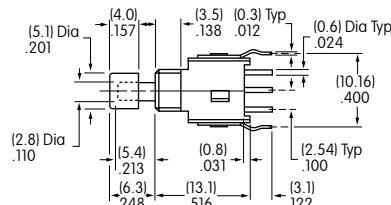
Straight PC • Bracket



AB25AB-FA



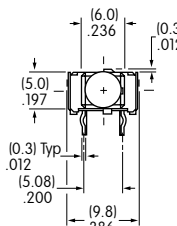
Double Pole



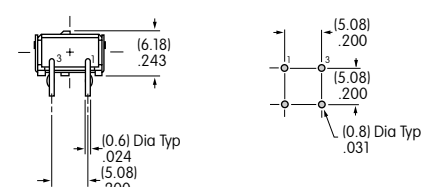
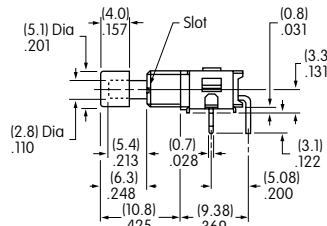
Right Angle PC



AB11AH-FA



Single Pole (Single Throw)





Series A

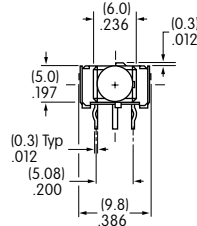
Washable Subminiature Pushbutton Switches

TYPICAL SWITCH DIMENSIONS

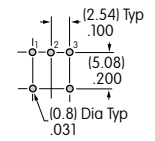
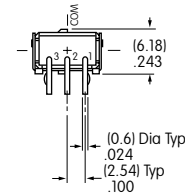
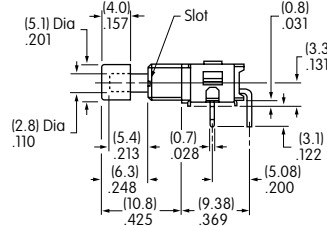
Right Angle PC



AB15AH-FA



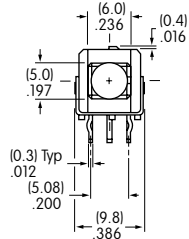
Single Pole (Double Throw)



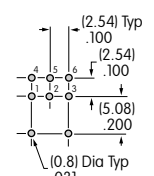
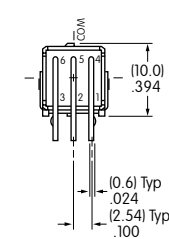
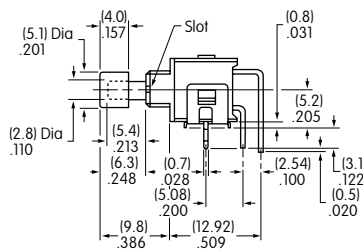
Right Angle PC



AB25AH-FA



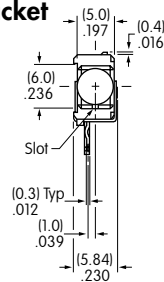
Double Pole



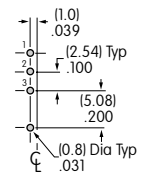
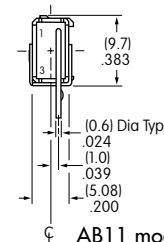
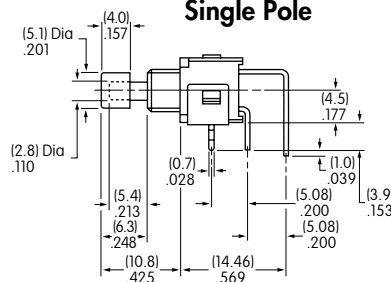
Vertical PC • Inline Bracket



AB11AV1-FA



Single Pole

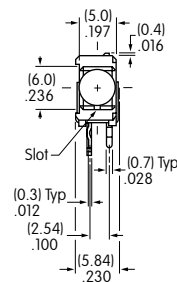


AB11 models do not have terminal 2.

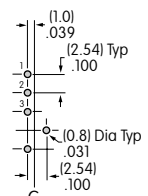
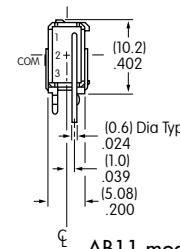
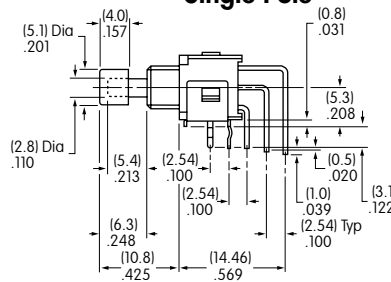
Vertical PC



AB15AV-FA



Single Pole

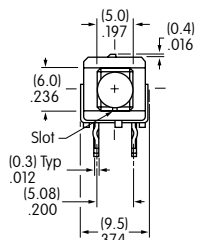


AB11 models do not have terminal 2.

Vertical PC



AB25AV-FA



Double Pole

