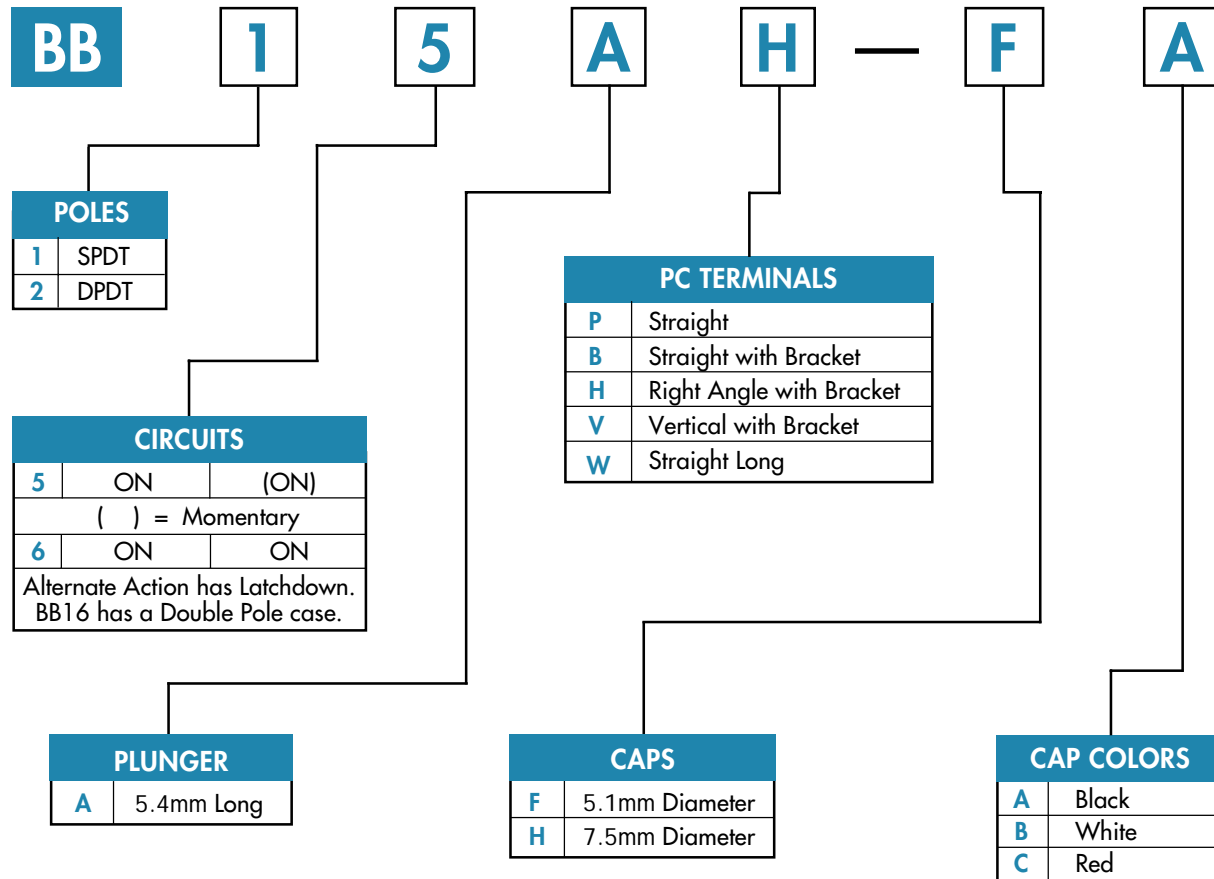




TYPICAL SWITCH ORDERING EXAMPLE



DESCRIPTION FOR TYPICAL ORDERING EXAMPLE

BB15AH-FA





GENERAL SPECIFICATIONS

Electrical Capacity (Resistive Load)

Logic Level: 0.4VA maximum @ 28V AC/DC maximum
(Applicable Range 0.1mA ~ 0.1A @ 20mV ~ 28V)

Note: See [Supplement Index](#) to find explanation of operating range.

Other Ratings

Contact Resistance: 50 milliohms maximum
Insulation Resistance: 500 megohms minimum @ 500V DC
Dielectric Strength: 500V AC minimum
Mechanical Life: 50,000 operations minimum (momentary)
25,000 operations minimum (alternate action)
Electrical Life: 50,000 operations minimum (momentary)
25,000 operations minimum (alternate action)
Static Capability: Withstands 10 kilovolts ESD
Nominal Operating Force: 260 grams (momentary); 300 grams (alternate action)
Contact Timing: Nonshorting
Travel: Momentary: Pretravel 0.7mm (.028"); Overtravel 0.4mm (.016"); Total 1.1mm (0.43")
Alternate: 1.0mm (.039") pretravel; 1.0mm (.039") overtravel; 2.0mm (.079") total travel

Materials & Finishes

Plunger: Polyacetal
Bushing: Carbon blended polyamide
Case Housing: Glass fiber reinforced polyamide
Support Bracket: Tin plated phosphor bronze
Movable Contact: Phosphor bronze with gold plating over silver plating
Stationary Contacts: Brass with gold plating over nickel undercoating
Terminals: Brass with gold plating over nickel undercoating

Environmental Data

Operating Temp Range: -30°C through +85°C (-22°F through +185°F)
Humidity: 90 ~ 95% humidity for 96 hours @ 40°C (104°F)
Vibration: 10 ~ 55Hz with peak-to-peak amplitude of 1.5mm traversing the frequency range & returning in 1 minute; 3 right angled directions for 2 hours
Shock: 50g acceleration (tested in 6 right angled directions, with 5 shocks in each direction)

Installation

Cap Installation Force: 5.1 kg (11.2 lbs) maximum downward force on actuator;
actuator must be in UP position to remove cap from alternate action models.
Soldering Time & Temperature: 3 seconds @ 350°C or 5 seconds @ 270°C
Process Seal: See [Supplement Index](#) for specific processing data.
Actuator must be in UP position to process alternate action models.

Standards & Certifications

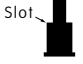



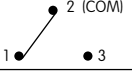
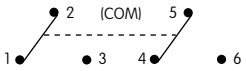
Flammability Standards: UL94V-0 available
IECQ Approved: All pushbutton models recognized at 0.4VA maximum @ 28V AC/DC maximum
Qualification Approval Number: JP792-2A



Series B

Washable Subminiature Antistatic Pushbutton Switches

POLES & CIRCUITS

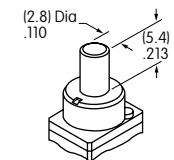
		Plunger Position () = Momentary		Connected Terminals		Throw & Schematics
Pole	Model	Normal 	Down 	Normal 	Down 	Note: Terminal numbers are not actually on the switch.
SP	BB15 BB16	ON ON	(ON) ON	2-3	2-1	SPDT 
DP	BB25 BB26	ON ON	(ON) ON	2-3 5-6	2-1 5-4	DPDT 

PLUNGER

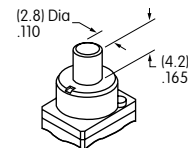
A 5.4mm Long

Standard Plunger Color: White

Contact factory for other colors and lengths.



Normal Position



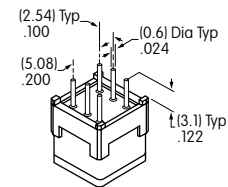
Latchdown Position

PC TERMINALS

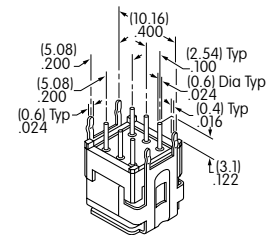
Both single pole and double pole alternate action models have double pole bases.

See Typical Switch Dimensions for details.

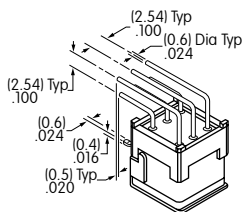
P Straight



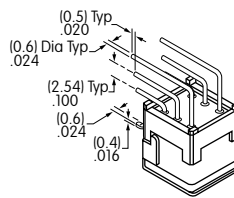
B Straight with Bracket



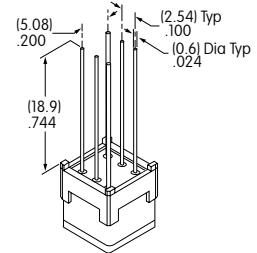
H Right Angle with Bracket



V Vertical with Bracket



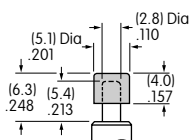
W Straight Long



OPTIONAL SLIP-ON CAPS

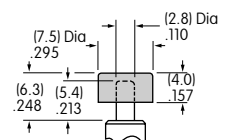
F AT475
5.1mm Diameter Cap

Material: PBT



H AT496
7.5mm Diameter Cap

Material: PBT



Colors Available:



Black



White



Red



Series B

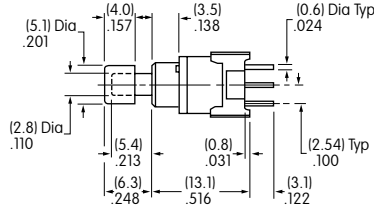
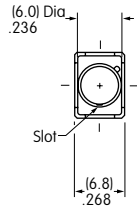
Washable Subminiature Antistatic Pushbutton Switches

TYPICAL SWITCH DIMENSIONS

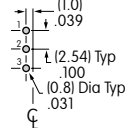
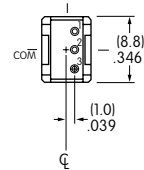
Straight PC



BB15AP-FA



Single Pole

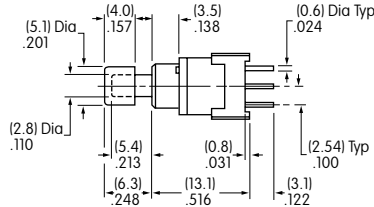
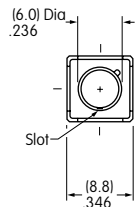


Momentary

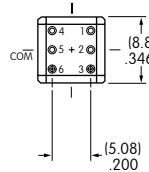
Straight PC



BB25AP-FA

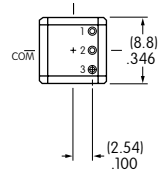


Double Pole



Momentary & Alternate

BB16AP

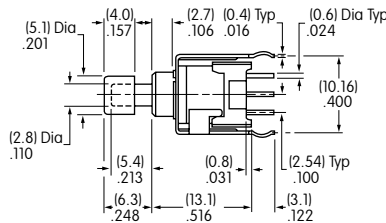
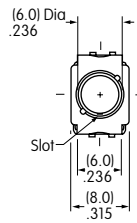


Alternate

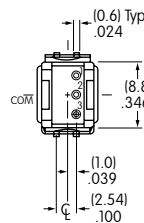
Straight PC • Bracket



BB15AB-FA



Single Pole

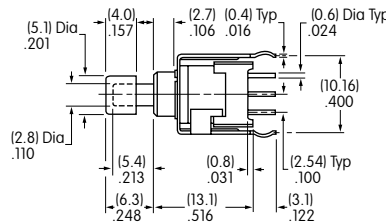
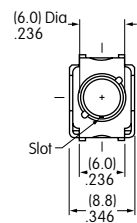


Momentary

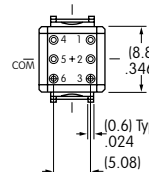
Straight PC • Bracket



BB25AB-FA

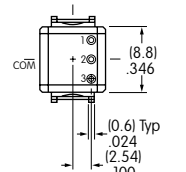


Double Pole



Momentary & Alternate

BB16AB



Alternate



Series B

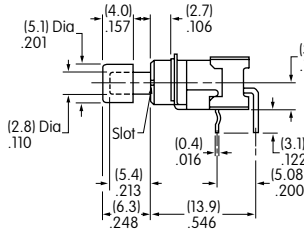
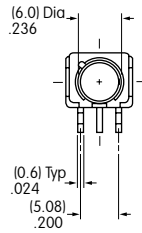
Washable Subminiature Antistatic Pushbutton Switches

TYPICAL SWITCH DIMENSIONS

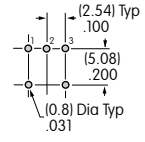
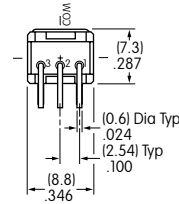
Right Angle PC



BB15AH-FA



Single Pole

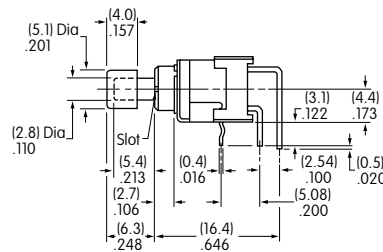
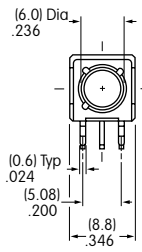


Momentary

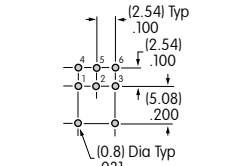
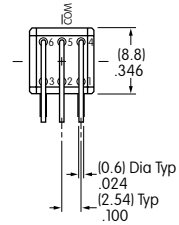
Right Angle PC



BB25AH-FA

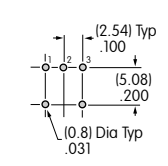
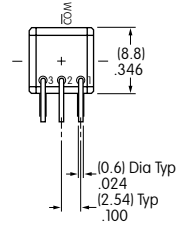


Double Pole



Momentary & Alternate

BB16AH

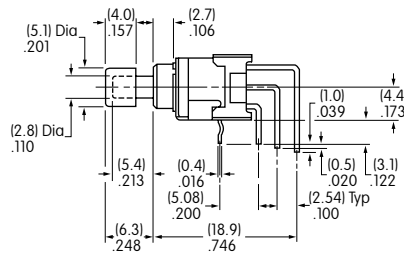
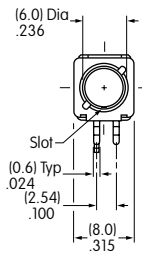


Alternate

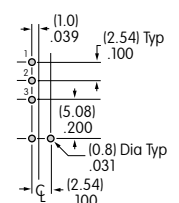
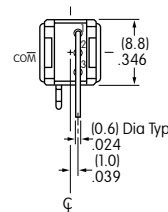
Vertical PC



BB15AV-FA



Single Pole

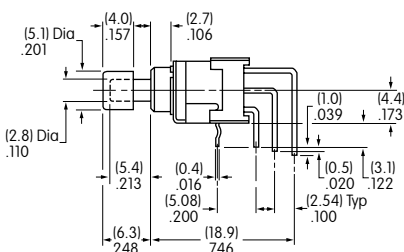
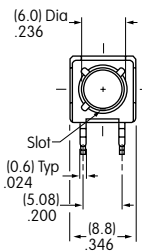


Momentary

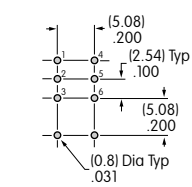
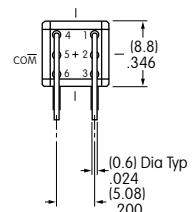
Vertical PC



BB25AV-FA

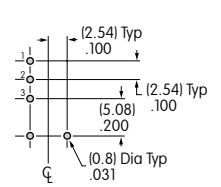
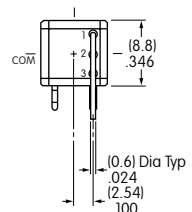


Double Pole



Momentary & Alternate

BB16AV



Alternate