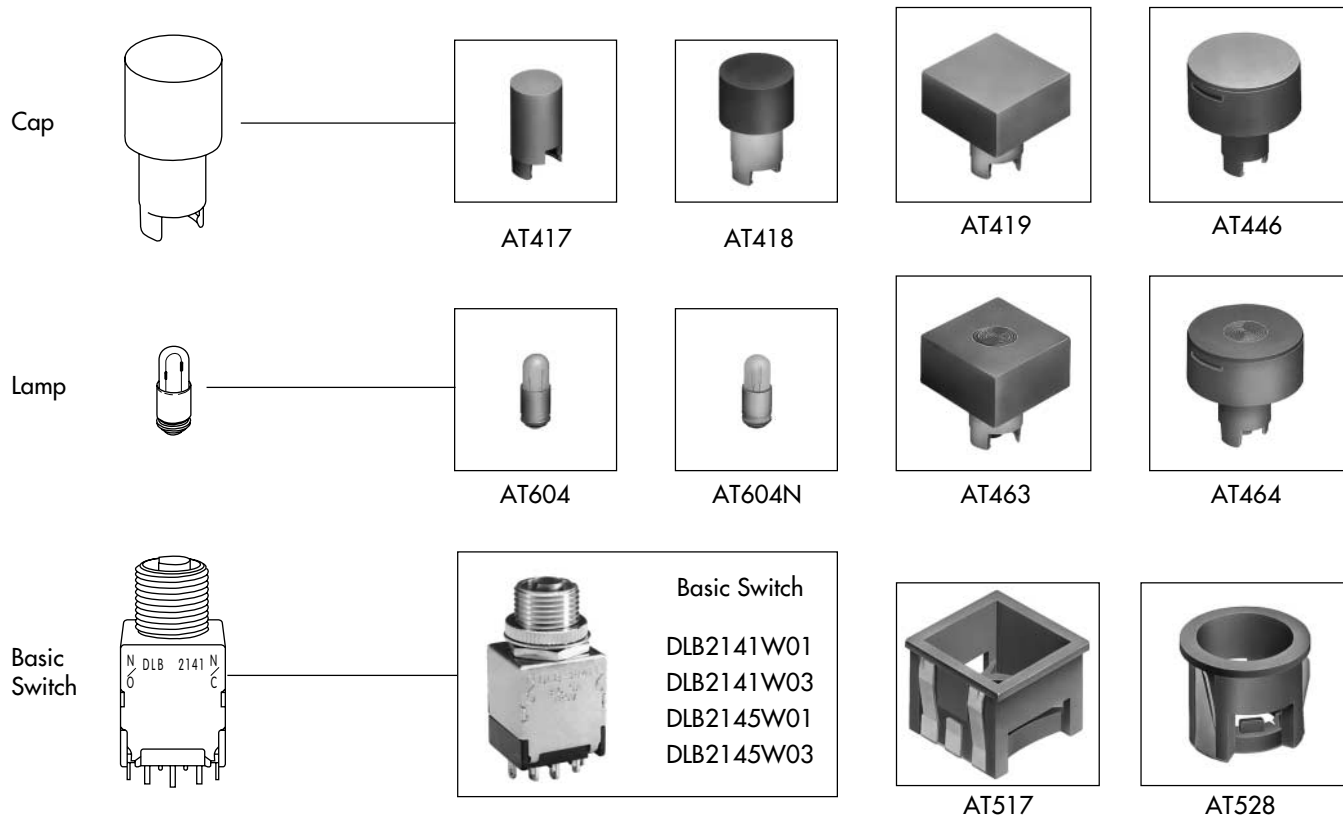




Series DLB

Panel Mount Power Rated Pushbutton Switches



GENERAL SPECIFICATIONS

Electrical Capacity (Resistive Load)

Power Level (Silver Contacts): 5A @ 125V AC or 3A @ 250V AC or 30V DC

Other Ratings

Contact Resistance: 10 milliohms maximum
Insulation Resistance: 200 megohms minimum @ 500V DC
Dielectric Strength: 1,000V AC minimum between contacts; 1,500V AC minimum between contacts & case
Mechanical Life: 30,000 operations minimum
Electrical Life: 10,000 operations minimum
Nominal Operating Force: 1,300 grams for momentary; 1,200 grams for alternate action
Travel: 1.0mm (.039") pretravel; 4.0mm (.157") overtravel; 5.0mm (.196") total travel

Materials & Finishes

Caps: Polycarbonate
Plunger: Polyacetal resin
Bushing: Brass with chrome plating
Housing: Steel, chromate over zinc
Movable Contact: Silver
Stationary Contacts: Silver with silver plating
Base: Phenolic resin
Common Terminals: Copper with silver plating
End Terminals: Copper with silver plating
Lamp Terminals: Brass with nickel plating

Standards & Certifications

UL Recognized: All models recognized at 5A @ 125V AC; UL File No. E44145
 Add "/U" to end of part number to order UL mark on switch.



Series DLB

Panel Mount Power Rated Pushbutton Switches

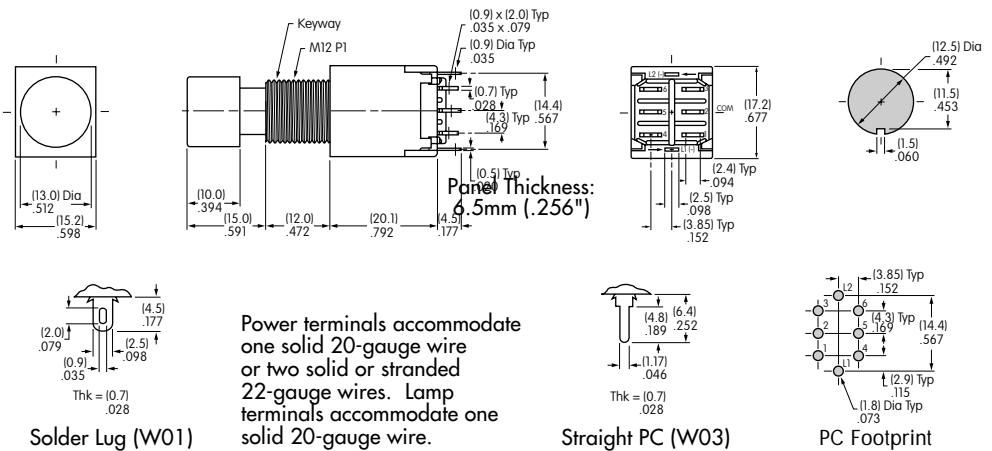
BASIC SWITCH

		Plunger Position () = Momentary		Connected Terminals		Terminals
Model	Pole	Normal Keyway	Down 	Normal Keyway	Down 	Terminal numbers are not actually on the switch.
DLB2141W01 DLB2141W03 DLB2145W01 DLB2145W03	DP	ON ON ON ON	(ON) (ON) ON ON	2-3 5-6	2-1 5-4	Solder Lug Straight PC Solder Lug Straight PC
Throw & Power/Lamp Schematics						Lamp circuit is isolated and requires external power source.



DLB2145W01 with Cap AT418

Standard Hardware:
AT504
Knurled Face Nut,
AT508
Lockwasher,
AT527
Hex Nut.
[Detail in Accessories & Hardware section.](#)



LAMPS & ELECTRICAL SPECIFICATIONS

Electrical specifications are determined at a basic temperature of 25°C. Lamp circuit is independent of switch operation. The ballast resistor calculation and more lamp detail are shown in the Supplement; see [Supplement Index](#).

Incandescent & Neon Lamps for Caps AT419, AT417, AT418, & AT446

Part Number	Lamp Type	Voltage	Current	Endurance	
AT604-6V	Incandescent	6V	200mA	1,000 hours	
AT604-14V	Incandescent	14V	80mA	750 hours	
AT604-28V	Incandescent	28V	40mA	1,000 hours	
AT604N	Neon	110V	1.5mA	10,000 hours	

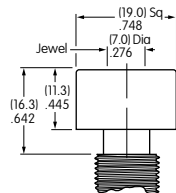
Use Neon with AT417 & AT418 white caps only. Recommended Resistors: 33K ohms for 110V AC; 100K ohms for 220V AC

Single Element LED in Spot Illuminated Black Opaque Cap

Part Number	LED Color & Cap Description	Forward Peak Current	Continuous Fwd Current	Forward Voltage	Reverse Peak Voltage	Current Reduction Above 25°C
AT463C	Red LED in Square Cap	35mA	25mA	1.65V	3V	0.57mA/°C
AT463F	Green LED in Square Cap	30mA	20mA	2V	3V	0.43mA/°C
AT464C	Red LED in Round Cap	35mA	25mA	1.65V	3V	0.57mA/°C
AT464F	Green LED in Round Cap	30mA	20mA	2V	3V	0.43mA/°C

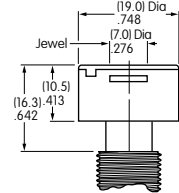
AT463

Can be combined with Square Mounter AT517.



AT464

Can be combined with Round Mounter AT528.


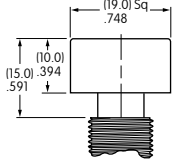

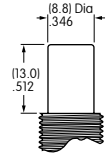

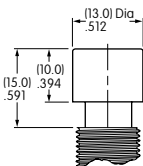

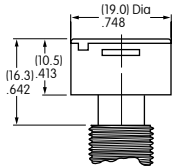




Series DLB

Panel Mount Power Rated Pushbutton Switches

CAP TYPES & COLORS

			Part Number	Cap	Color
AT419  	Can be used with Square Mounter	AT419B	.748" Square	White	
		AT419C	.748" Square	Red	
		AT419D	.748" Square	Orange	
		AT419E	.748" Square	Yellow	
		AT419F	.748" Square	Green	
		AT419G	.748" Square	Blue	
AT417  		AT417B	.346" Diameter	White	
		AT417C	.346" Diameter	Red	
		AT417D	.346" Diameter	Orange	
		AT417E	.346" Diameter	Yellow	
		AT417F	.346" Diameter	Green	
		AT417G	.346" Diameter	Blue	
AT418  		AT418B	.512" Diameter	White	
		AT418C	.512" Diameter	Red	
		AT418D	.512" Diameter	Orange	
		AT418E	.512" Diameter	Yellow	
		AT418F	.512" Diameter	Green	
		AT418G	.512" Diameter	Blue	
AT446 Lens Holder  	Can be used with Round Mounter	AT446	.748" Diameter		
Black opaque holder; white, red, green, & blue translucent lenses are provided.					

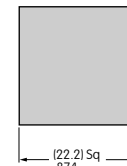
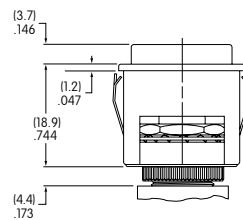
OPTIONAL SNAP-IN MOUNTERS

AT517A

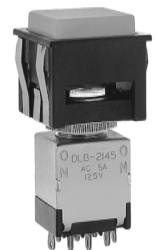
Mounter for Square Caps

Provided with assembly instructions

Material: Fiberglass reinforced nylon



Panel Cutout



DLB2145W01
with Cap AT419 & Square Mounter

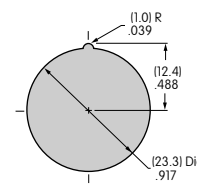
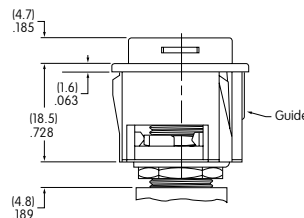
Panel Thickness: 1.0 ~ 4.0mm (.039 ~ .157")

AT528A

Mounter for 19mm Round Caps

Provided with assembly hardware and instructions

Material: Fiberglass reinforced nylon



Panel Cutout



DLB2145W01
with Cap AT446 & Round Mounter

Panel Thickness: 1.0 ~ 4.0mm (.039 ~ .157")