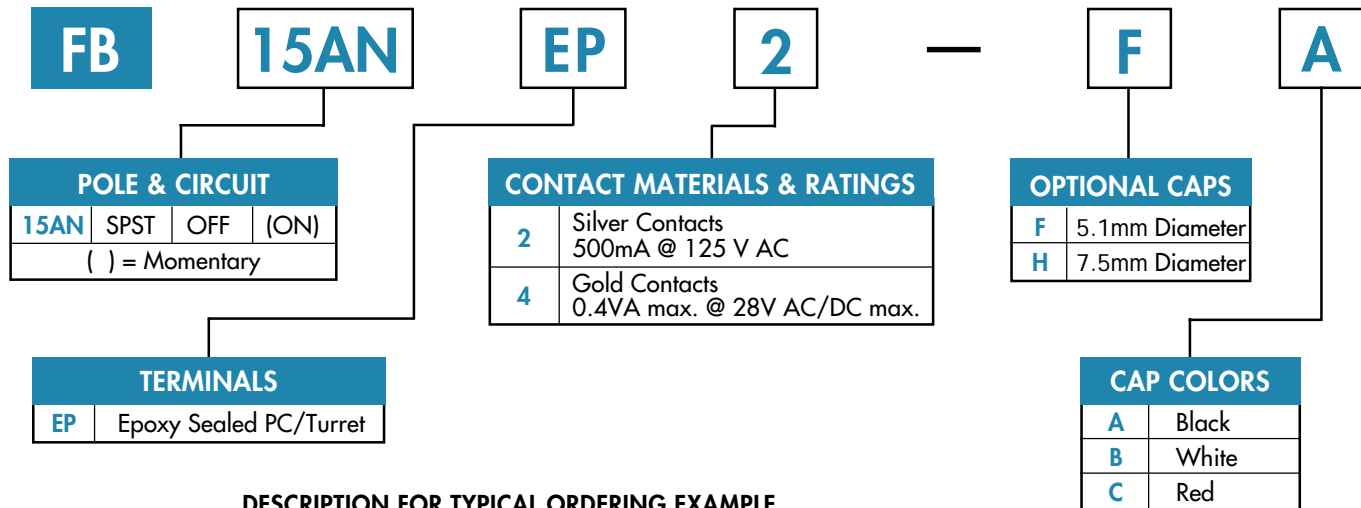




## TYPICAL SWITCH ORDERING EXAMPLE



### DESCRIPTION FOR TYPICAL ORDERING EXAMPLE

#### FB15ANEP2-FA



**IMPORTANT:**  
Switches are supplied without UL marking unless specified. Specific models & ratings noted on Engineering Particulars page.

### ■ Dimensions

## GENERAL SPECIFICATIONS

### Electrical Capacity (Resistive Load)

**Power Level:** 500mA @ 125V AC for silver contacts  
**Logic Level:** 0.4VA maximum @ 28V AC/DC maximum for gold contacts  
 Note: See [Supplement Index](#) to find explanation of operating range.

### Other Ratings

**Contact Resistance:** 30 milliohms maximum  
**Insulation Resistance:** 100 megohms minimum @ 500V DC  
**Dielectric Strength:** 1,000V AC minimum  
**Mechanical Life:** 50,000 operations minimum  
**Electrical Life:** 50,000 operations minimum  
**Nominal Operating Force:** 220 grams  
**Travel:** 1.1mm (.043") pretravel; 0.57mm (.022") overtravel; 1.67mm (.065") total travel

### Materials & Finishes

**Plunger:** Polyacetal  
**Bushing/Housing:** Brass with nickel plating  
**Case:** Phenolic resin  
**Movable Contact:** Brass with silver or gold plating  
**Stationary Terminals:** Phosphor bronze with silver or gold plating

### Environmental & Installation Data

**Operating Temp Range:** -10°C through +70°C (+14°F through +158°F)  
**Soldering Time & Temperature:** 5 seconds @ 270°C

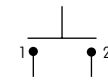


# Series FB

## Momentary Pushbutton Switches

### POLES & CIRCUITS

		Plunger Position ( ) = Momentary		Connected Terminals		Throw & Schematic
Pole	Model	Normal	Down	Normal	Down	
						Note: Terminal numbers are not actually on the switch.
SP	FB15AN	OFF	(ON)	OPEN	1-2	

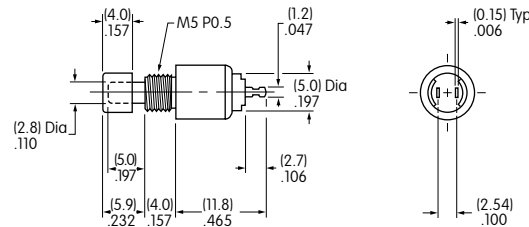
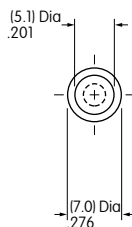


### CONTACT MATERIALS & RATINGS

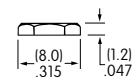
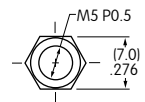
<b>2</b>	Silver Contacts	Power Level	500mA @ 125V AC
<b>4</b>	Gold Contacts	Logic Level	0.4VA maximum @ 28V AC/DC maximum

### TYPICAL SWITCH DIMENSIONS

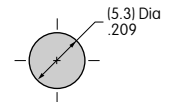
#### Solder Lug



Standard Hardware:  
AT536 Hex Nut  
Material: Brass with  
nickel plating



Panel Thickness:  
2.8mm (.110")  
maximum



FB15ANEP2-FA

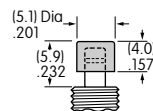
Plunger is white polyacetal.

### OPTIONAL SLIP-ON CAPS & COLORS

**F** AT475  
5.1mm Diameter

Material: Polycarbonate

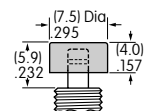
Finish: Glossy



**H** AT496  
7.5mm Diameter

Material: Polycarbonate

Finish: Glossy



Colors Available:

**A** Black

**B** White

**C** Red