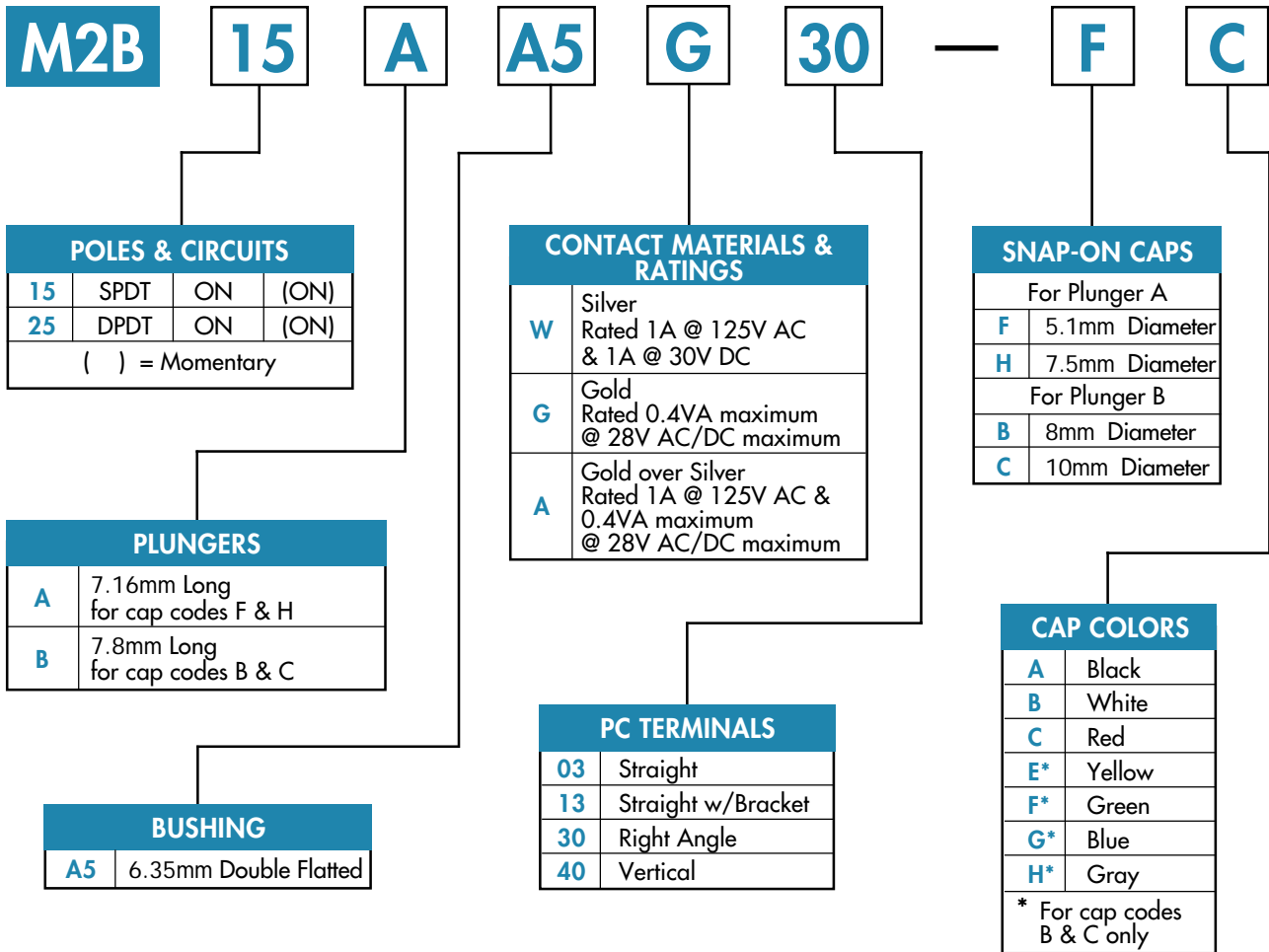




TYPICAL SWITCH ORDERING EXAMPLE

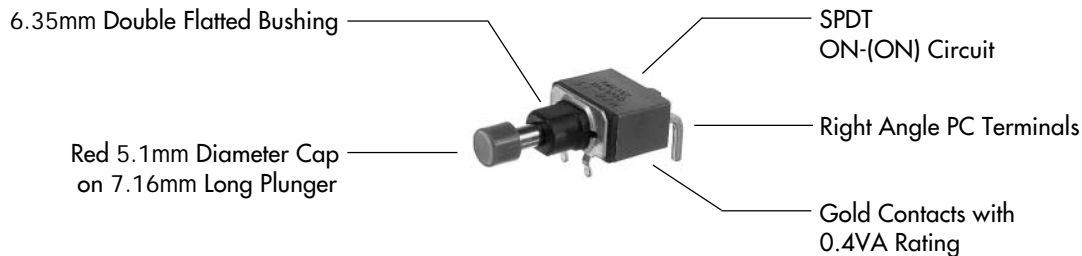


DESCRIPTION FOR TYPICAL ORDERING EXAMPLE

M2B15AA5G30-FC

IMPORTANT:

Switches are supplied without UL & CSA marking unless specified. Specific models & ratings noted on General Specifications page.





GENERAL SPECIFICATIONS

Electrical Capacity (Resistive Load)

- Power Level (code W):** 1A @ 125V AC or 1A @ 30V DC
 - Logic Level (code G):** 0.4VA maximum @ 28V AC/DC maximum
 - Logic/Power Level (code A):** Combines W & G ratings
- Note: See [Supplement Index](#) to find explanation of dual rating & operating range.

Other Ratings

- Contact Resistance:** 20 milliohms maximum for silver; 30 milliohms maximum for gold
- Insulation Resistance:** 1,000 megohms minimum @ 500V DC
- Dielectric Strength:** 1,000V AC minimum between contacts; 1,500V AC minimum between contacts & case
- Mechanical Life:** 200,000 operations minimum
- Electrical Life:** 25,000 operations minimum for silver; 100,000 operations minimum for gold
- Nominal Operating Force:** Single pole 300 grams & double pole 500 grams
- Contact Timing:** Nonshorting (break-before-make)
- Travel:** 0.6mm (.023") pretravel; 0.4mm (.016") overtravel; 1.0mm (.039") total travel

Materials & Finishes

- Plunger:** Brass with nickel plating
- Support Bracket:** Steel with tin-lead plating for straight PC; brass with tin-lead plating for angle PC
- Bushing/Housing:** Glass fiber reinforced polyamide
- Sealing Ring:** Nitrile butadiene rubber
- Base:** Glass fiber reinforced polyamide
- Movable Contacts:** Silver alloy with silver plating (code W); copper with gold plating over nickel plating (code G); or silver alloy with gold plating over nickel plating (code A)
- Stationary Contacts:** Silver alloy with silver plating (code W); copper with gold plating over nickel plating (code G); or silver alloy with gold plating over nickel plating (code A)
- Terminals:** Brass with silver or gold plating

Environmental Data

- Operating Temp Range:** -30°C through +85°C (-22°F through +185°F)
- Humidity:** 90 ~ 95% humidity for 96 hours @ 40°C (104°F)
- Vibration:** 10 ~ 55Hz with peak-to-peak amplitude of 1.5mm traversing the frequency range & returning in 1 minute; 3 right angled directions for 2 hours
- Shock:** 50g acceleration (tested in 3 right angled directions, with 5 shocks in each direction)

Installation

- Cap Installation Force:** 5.0 kg (11 lbs) for plunger A & 8.1 kg (18 lbs) for plunger B
- Soldering Time & Temperature:** 3 seconds @ 350°C manual soldering or 5 seconds @ 270°C solder pot
Automated soldering is highly recommended.
- Process Seal:** See [Supplement Index](#) for specific processing data.

Standards & Certifications






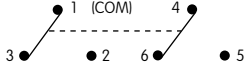
- Flammability Standards:** Bushing/Housing & Base are UL94V-0 rated
- UL Recognized:** All models recognized at 1A @ 125V AC, 1A @ 30V DC or 0.4VA maximum @ 28V AC/DC maximum; UL File No. E44145
- CSA Certified:** All models certified at 1A @ 125V AC, 1A @ 30V DC or 0.4VA maximum @ 28V AC/DC maximum; CSA File No. LR23535



Series M2

Washable Miniature Pushbutton Switches

POLES & CIRCUITS

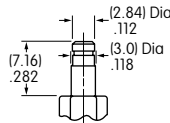
		Plunger Position () = Momentary		Connected Terminals		Throw & Schematics
Pole	Model	Normal 	Down 	Normal 	Down 	
SP	M2B15	ON	(ON)	1-3	1-2	SPDT 
DP	M2B25	ON	(ON)	1-3 4-6	1-2 4-5	DPDT 

Note: Terminal numbers are not actually on the switch.

PLUNGERS

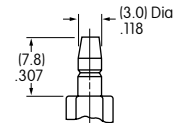
A 7.16mm Long

Material: Chrome over brass



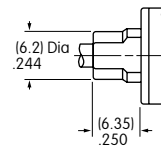
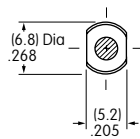
B 7.8mm Long

Material: Chrome over brass



BUSHING

A5 6.35mm Double Flatted



CONTACT MATERIALS & RATINGS

W Silver over Silver

Power Level

1A @ 125V AC & 1A @ 30V DC

G Gold over Brass or Copper

Logic Level

0.4VA maximum @ 28V AC/DC maximum

Note: See [Supplement Index](#) to find complete explanation of operating range.

A Gold over Silver

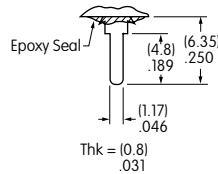
Power Level
or Logic Level

1A @ 125V AC
or 0.4VA maximum @ 28V AC/DC maximum

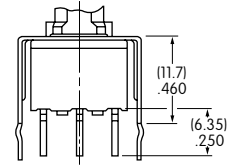
Note: This dual rated option is suitable when two or more identical switches are used in logic and in power circuits within the same application. See [Supplement Index](#) to find complete explanation of dual rating and operating range.

TERMINALS

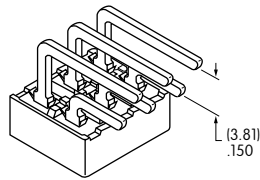
03 6.35mm Straight



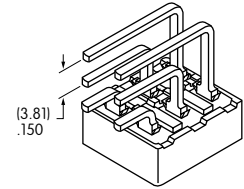
13 6.35mm Straight w/ 11.7mm Bracket



30 3.81mm Right Angle



40 3.81mm Vertical

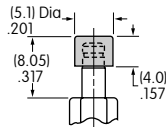


OPTIONAL SNAP-ON CAPS

For Plunger Type A

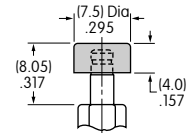
F AT475
5.1mm Diameter

Material: Polycarbonate
Colors Available:
A, B, C



H AT496
7.5mm Diameter

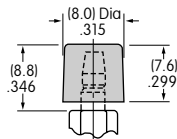
Material: Polycarbonate
Colors Available:
A, B, C



For Plunger Type B

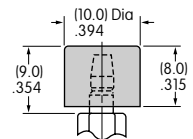
B AT443
8mm Diameter

Material: Polycarbonate
Colors Available:
A, B, C, E, F, G, H



C AT442
10mm Diameter

Material: Polycarbonate
Colors Available:
A, B, C, E, F, G, H



Cap Colors Available:



Black



White



Red



Yellow



Green



Blue



Gray



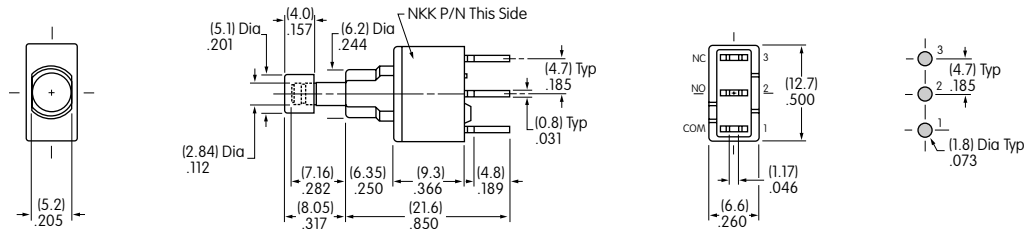
Series M2

Washable Miniature Pushbutton Switches

TYPICAL SWITCH DIMENSIONS

Straight PC

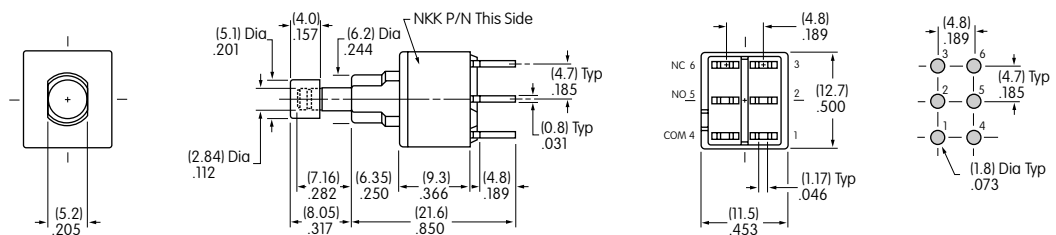
Single Pole



M2B15AA5G03-FC

Straight PC

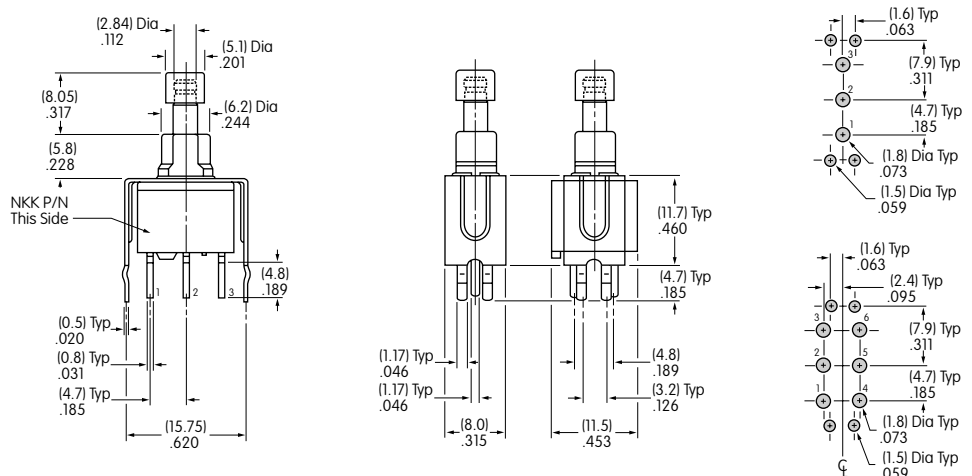
Double Pole



M2B25AA5G03-FC

Straight PC • Bracket

Single & Double Pole



M2B25AA5G13-FC



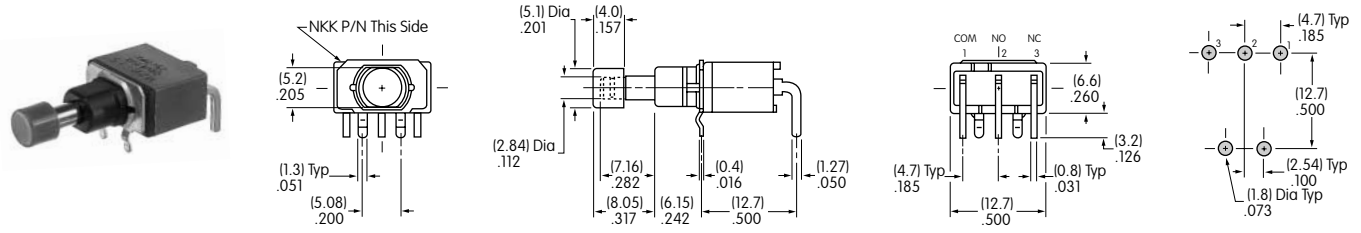
Series M2

Washable Miniature Pushbutton Switches

TYPICAL SWITCH DIMENSIONS

Right Angle PC

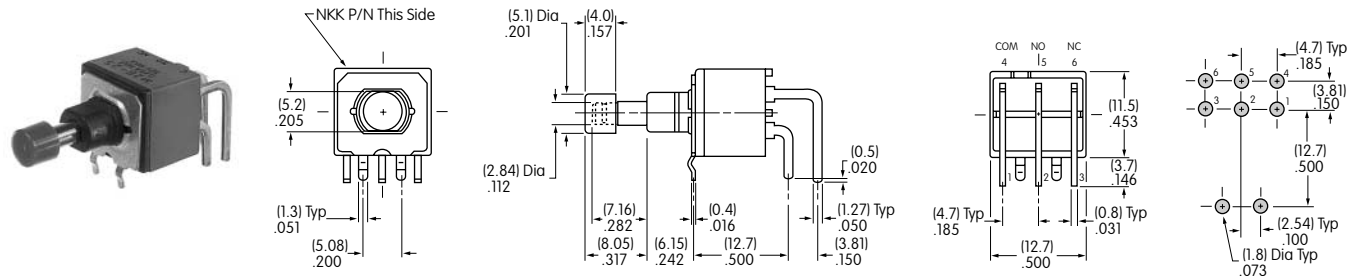
Single Pole



M2B15AA5G30-FC

Right Angle PC

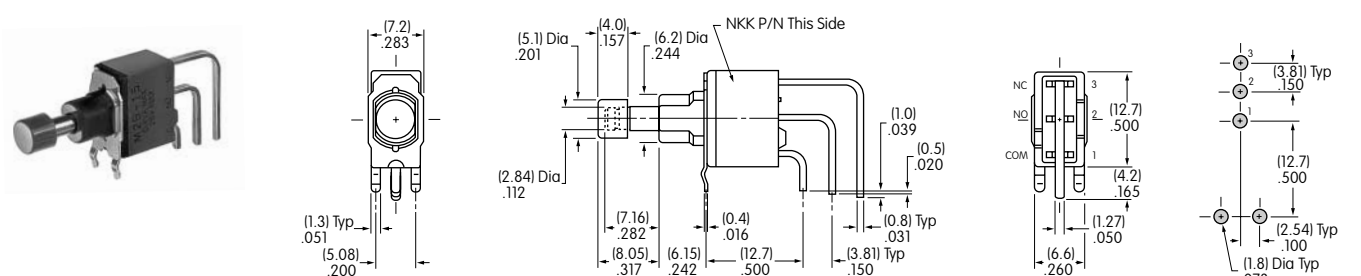
Double Pole



M2B25AA5G30-FC

Vertical PC

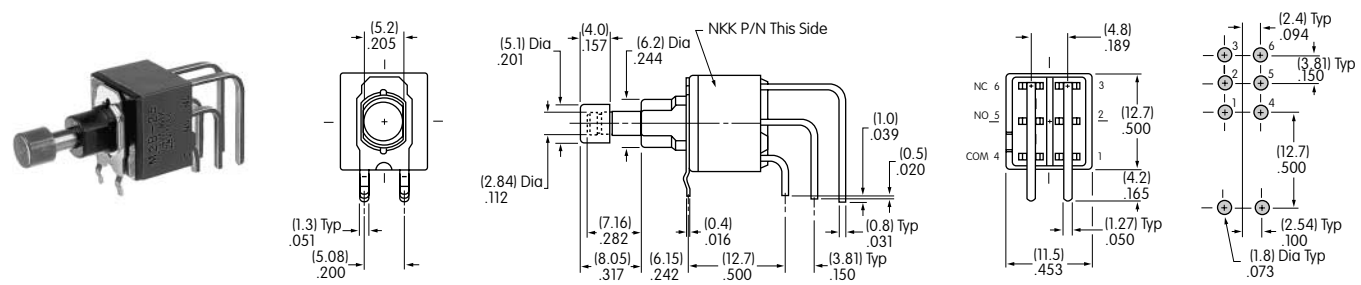
Single Pole



M2B15AA5G40-FC

Vertical PC

Double Pole



M2B25AA5G40-FC