



# Series SB

Push-Pull Pushbutton Switches

## GENERAL SPECIFICATIONS FOR PUSH-PULL PUSHBUTTONS

### Electrical Capacity (Resistive & Inductive Load)

**Power Level:** Shown in the following tables



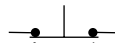
### Other Ratings

<b>Contact Resistance:</b>	10 milliohms maximum
<b>Insulation Resistance:</b>	200 megohms minimum @ 500V DC
<b>Dielectric Strength:</b>	1,500V AC minimum
<b>Mechanical Life:</b>	30,000 operations minimum
<b>Electrical Life:</b>	10,000 operations minimum
<b>Total Travel:</b>	4.5mm (.177") for SB862; 1.5mm (.059") for SB282
<b>Operating Temp Range:</b>	-10°C through +70°C (+14°F through +158°F)

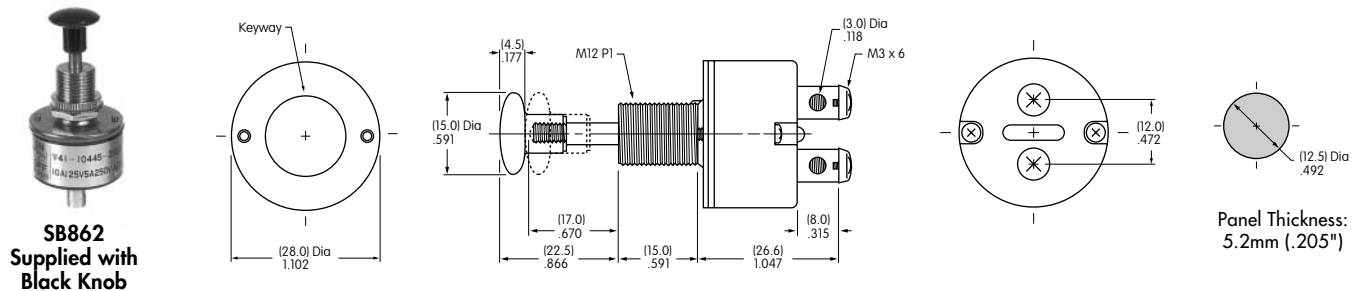
### Materials & Finishes

<b>Plunger:</b>	Brass with nickel plating
<b>Bushing:</b>	Brass with nickel plating
<b>Case:</b>	Phenolic resin
<b>Case Cover:</b>	Steel with zinc plating
<b>Movable Contactor:</b>	Brass with silver plating - SB862; copper with silver plating - SB282
<b>Movable &amp; Stationary Contacts:</b>	Silver - SB862; copper with silver plating - SB282
<b>Terminals:</b>	Brass with silver plating - SB862; copper with silver plating - SB282

## SINGLE POLE PUSH-PULL WITH SOLDER LUG



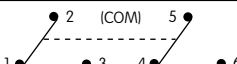
			Pushbutton Position/Connected Terminals ( ) = Momentary		Electrical Capacity (Resistive)	
Model	Approvals	Pole & Throw	Normal  Keyway	Down 	AC 125V	AC 250V
SB862	— —	SPST	ON 1-2	OFF —	10A	5A
<b>Throw &amp; Schematic:</b> SPST 					Note: Terminal numbers are not on the switch.	

- Standard Hardware: AT504 Knurled Nut, AT508 Lockwasher, AT527 Hex Backup Nut. See [Accessories & Hardware Index](#) for details.
- Solder lug terminal hole accommodates one 12-gauge solid or stranded wire.

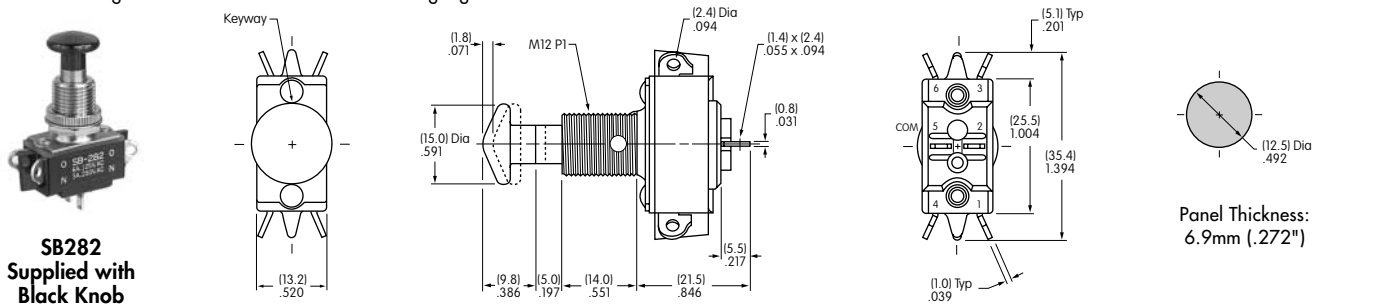


**SB862**  
Supplied with Black Knob

## DOUBLE POLE PUSH-PULL WITH SOLDER LUG

			Pushbutton Position/Connected Terminals ( ) = Momentary		Electrical Capacity (Resistive)	
Model	Approvals	Pole & Throw	Normal  Keyway	Down 	AC 125V	AC 250V
SB282	— —	DPDT	ON 2-3 5-6	ON 2-1 5-4	6A	3A
<b>Throw &amp; Schematic:</b> DPDT 					Notes: Terminal numbers are on the switch.	

- Standard Hardware: AT504 Knurled Nut, AT508 Lockwasher, AT527 Hex Backup Nut. See [Accessories & Hardware Index](#) for details.
- Solder lug terminal hole accommodates one 12-gauge solid or stranded wire.



**SB282**  
Supplied with Black Knob