



Series SCB

Snap Switch Pushbuttons

GENERAL SPECIFICATIONS

Electrical Capacity

Resistive Load: 10A & ½ HP @ 125 or 250V AC for long life models
15A & ½ HP @ 125 or 250V AC for high capacity models

Lamp Load: 5A @ 125V AC

Other Ratings

Contact Resistance: 15 milliohms maximum
Insulation Resistance: 100 megohms minimum @ 500V DC
Dielectric Strength: 1,000V AC minimum between contacts; 1500V AC minimum between contacts & case
Mechanical Life: 5,000,000 operations minimum (10A models); 1,000,000 operations minimum (15A models)
Electrical Life: 25,000 operations minimum
Travel: Pretravel 1.19mm (.047"); Overtravel 1.01mm (.040"); Differential 0.27mm (.011")
Operating Temp Range: -55°C through +82°C (-67°F through +180°F)

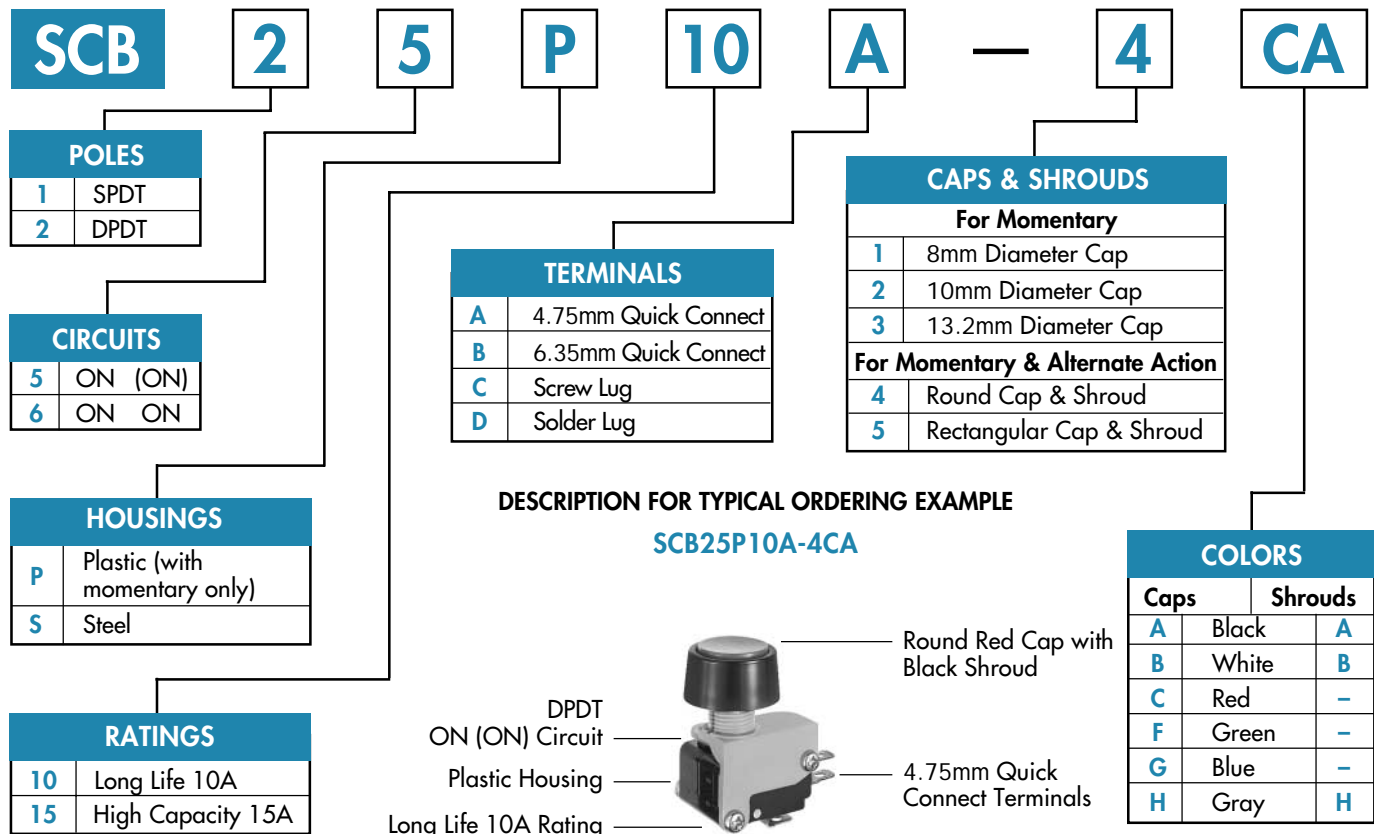
Materials & Finishes

Caps & Shrouds: Polycarbonate with glossy finish or PBT
Plunger: Polyacetal
Bushing: Brass with chrome plating
Case: Phenolic resin
Case Cover: Steel with zinc plating or glass fiber reinforced polyamide
Movable & Stationary Contacts: Silver alloy
Terminals: Brass with silver plating

Standards & Certifications

UL Recognized: Internal snap switch is UL recognized.
CSA Certified: Internal snap switch is CSA certified.

TYPICAL SWITCH ORDERING EXAMPLE







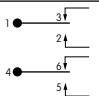
■ Dimensions 1 ■ Dimensions 2



Series SCB

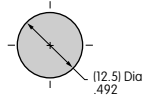
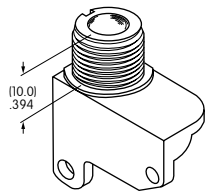
Snap Switch Pushbuttons

POLES & CIRCUITS

		Plunger Position () = Momentary		Connected Terminals		Throw & Schematics
Pole	Model	Normal  Keyway	Down 	Normal  Keyway	Down 	Note: Terminal numbers are not actually on the switch.
SP	SCB15 SCB16	ON ON	(ON) ON	1-3	1-2	
DP	SCB25 SCB26	ON ON	(ON) ON	1-3 4-6	1-2 4-5	DPDT 

HOUSINGS

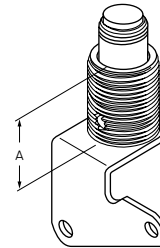
P Plastic
(for Momentary only)



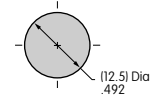
Max. Effective Panel Thickness:

4.2mm (.165")
4.0mm (.157") with Shroud

S Steel



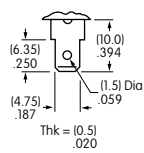
"A" =
11.2mm
Momentary
15.5mm
Alternate
Action



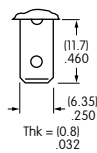
Max. Effective Panel Thickness:
Momentary 4.5mm (.177")
4.0mm (.157") with Shroud
Alternate Action 9.5mm (.374")
9.0mm (.354") with Shroud

TERMINALS

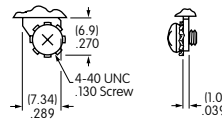
A 4.75mm Quick Connect



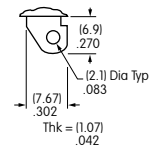
B 6.35mm Quick Connect



C Screw Lug



D Solder Lug

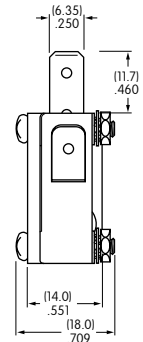
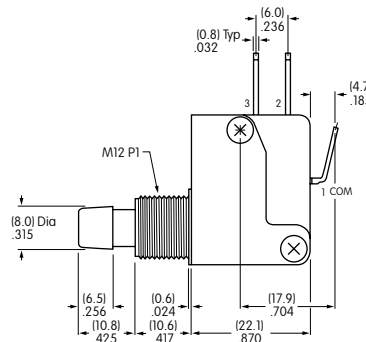
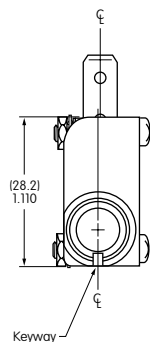


TYPICAL SWITCH DIMENSIONS

8mm Dia. Cap • 6.35mm Quick Connect



SCB15P10B-1C





Series SCB

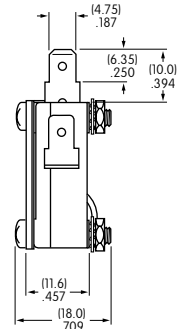
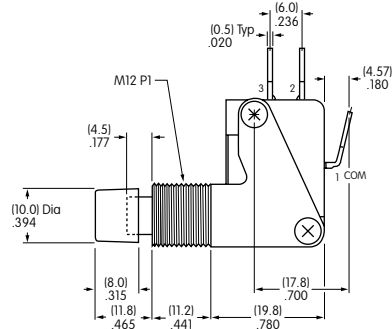
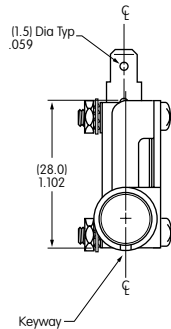
Snap Switch Pushbuttons

TYPICAL SWITCH DIMENSIONS

10mm Dia. Cap • 4.75mm Quick Connect



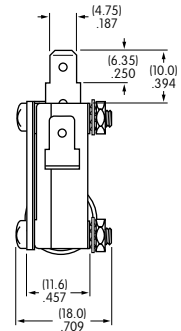
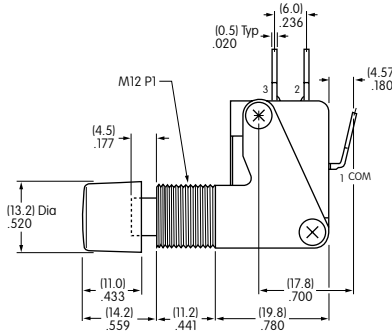
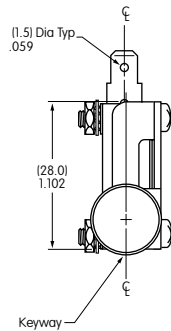
SCB15S10A-2A



13.2mm Dia. Cap • 4.75mm Quick Connect



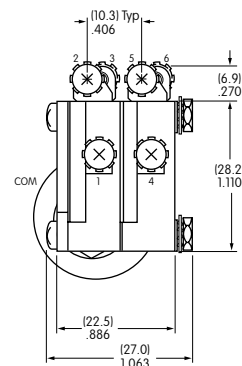
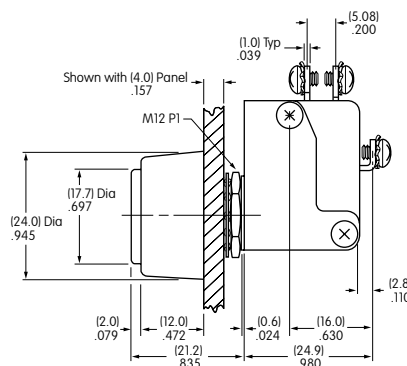
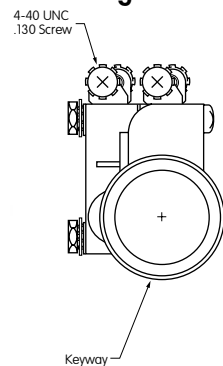
SCB15S10A-3C



Round Cap & Shroud • Screw Lug



SCB25P10C-4CA



Rectangular Cap & Shroud • Solder Lug



SCB26S10D-5CA

