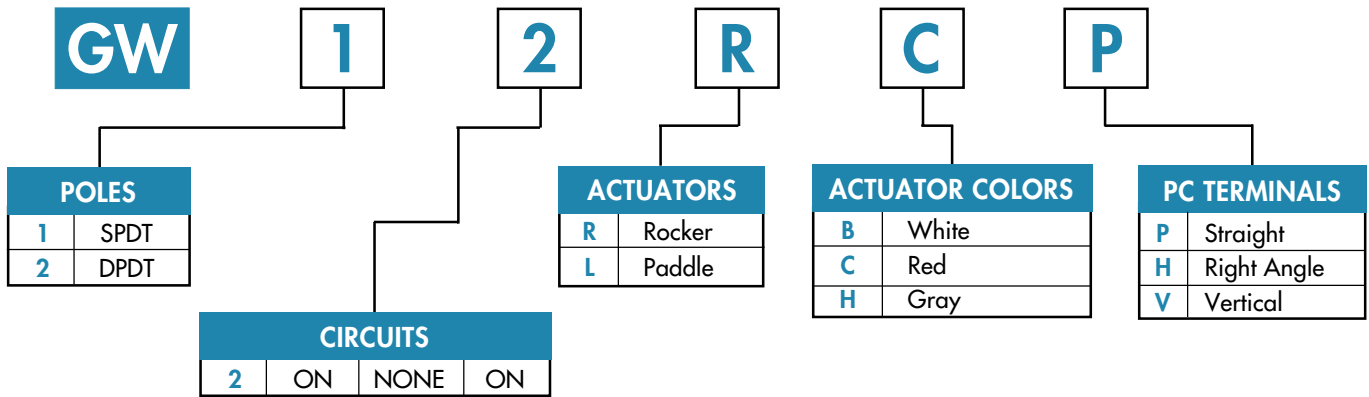




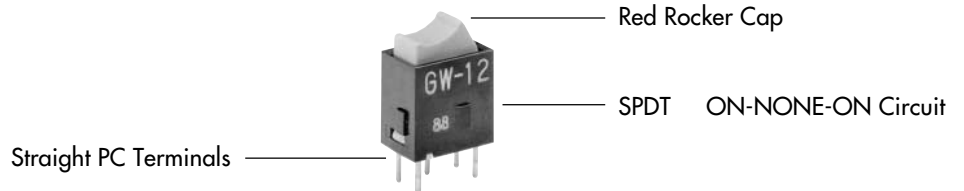
Series GW

Ultra-Thin Rocker Switches

TYPICAL SWITCH ORDERING EXAMPLE



DESCRIPTION FOR TYPICAL
ROCKER ORDERING EXAMPLE
GW12RCP



■ General Specifications ■ Dimensions 1 ■ Dimensions 2

POLES & CIRCUITS

Pole	Model	Rocker Position			Connected Terminals			Throw & Schematics
		Up	Center	Down	Up	Center	Down	
SP	GW12	ON	NONE	ON	2-3	OPEN	2-1	SPDT
DP	GW22	ON	NONE	ON	2-3 5-6	OPEN	2-1 5-4	DPDT

Note: Terminal numbers are not actually on the switch.

TYPICAL SWITCH DIMENSIONS

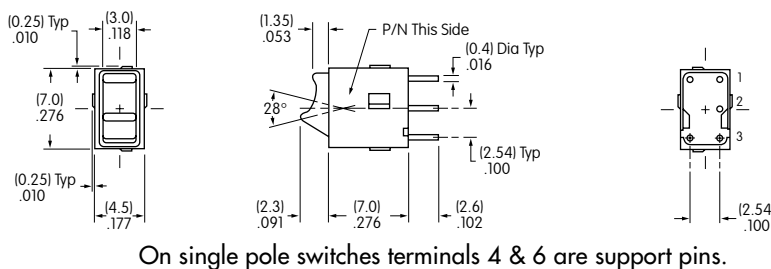
Straight PC



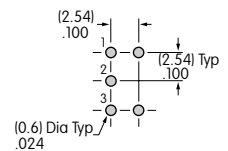
GW12RCP



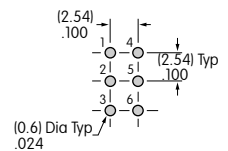
GW12LCP



Single Pole



Double Pole





Series GW

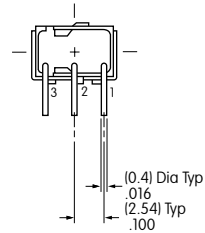
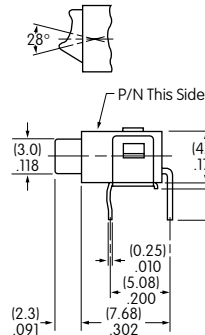
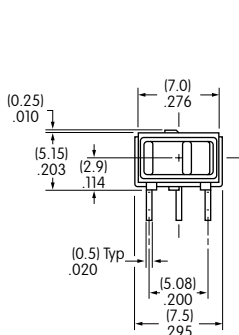
Ultra-Thin Rocker Switches

TYPICAL SWITCH DIMENSIONS

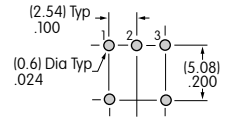
Right Angle PC



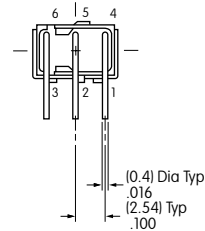
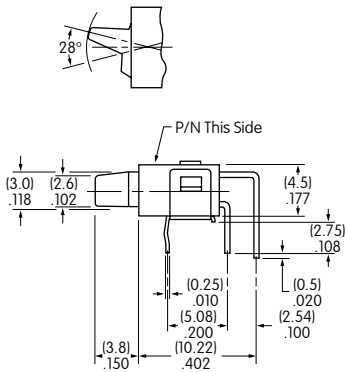
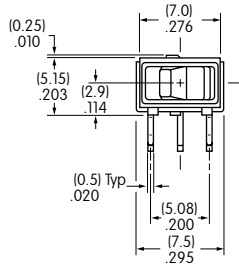
GW12RCH



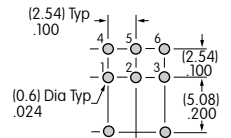
Single Pole



GW22LCH



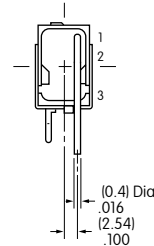
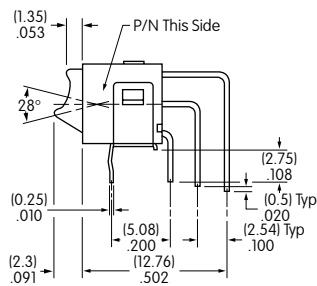
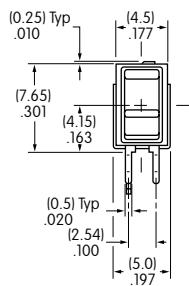
Double Pole



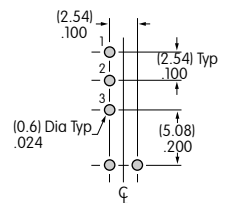
Vertical PC



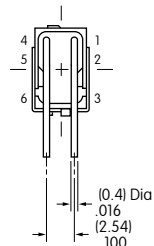
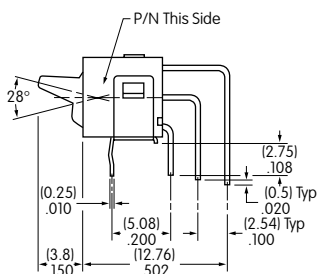
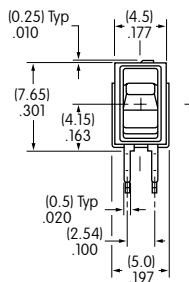
GW12RCV



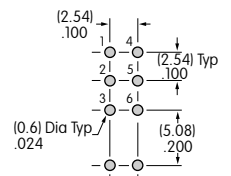
Single Pole



GW22LCV



Double Pole





GENERAL SPECIFICATIONS

Electrical Capacity (Resistive Load)

Logic Level: 0.4VA maximum @ 28V AC/DC maximum
(Applicable Range 0.1mA ~ 0.1A @ 20mV ~ 28V)

Note: See Supplement Index (page Z1) to find explanation of operating range.

Other Ratings

Contact Resistance: 80 milliohms maximum
Insulation Resistance: 500 megohms minimum @ 500V DC
Dielectric Strength: 500V AC minimum
Mechanical Life: 50,000 operations minimum
Electrical Life: 50,000 operations minimum
Nominal Operating Force: For Rockers 173.35 grams & for Paddles 132.56 grams
Angle of Throw: 28°

Materials & Finishes

Actuator: Glass fiber reinforced polyamide
Case: Glass fiber reinforced polyamide
Sealing Ring: Nitrile butadiene rubber
Movable Contacts: Phosphor bronze with gold plating over nickel
Stationary Contacts: Phosphor bronze with gold plating over nickel
Base: Glass fiber reinforced polyamide
Mounting Bracket: Phosphor bronze with tin plating
Terminals: Phosphor bronze with gold plating over nickel

Environmental Data

Operating Temp Range: -30°C through +85°C (-22°F through +185°F)
Humidity: 93% humidity for 240 hours @ 40°C (104°F)
Vibration: 10 ~ 55Hz with peak-to-peak amplitude of 1.5mm traversing the frequency range & returning in 1 minute; 3 right angled directions for 2 hours
Shock: 50g acceleration (tested in 6 right angled directions, with 5 shocks in each direction)

Installation

Soldering Time & Temperature: 3 seconds @ 350°C or 5 seconds @ 270°C
Process Seal: Not available

Standards & Certifications

Flammability Standards: UL94V-0 actuator & case/base